

Assessing fate and transport issues of the DWH oil spill using simulations and merged datasets

Pat Fitzpatrick

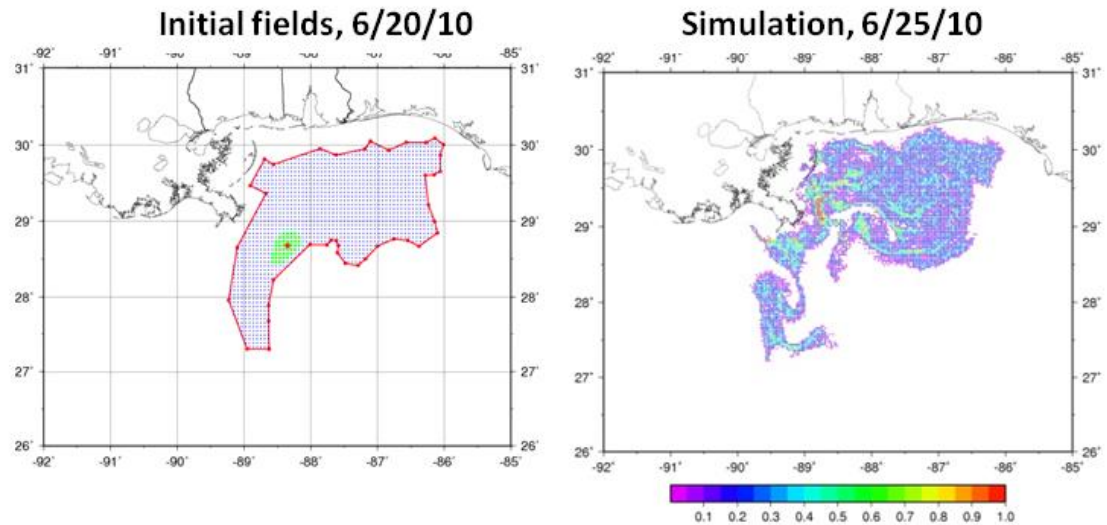
Geosystems Research Institute

Mississippi State University

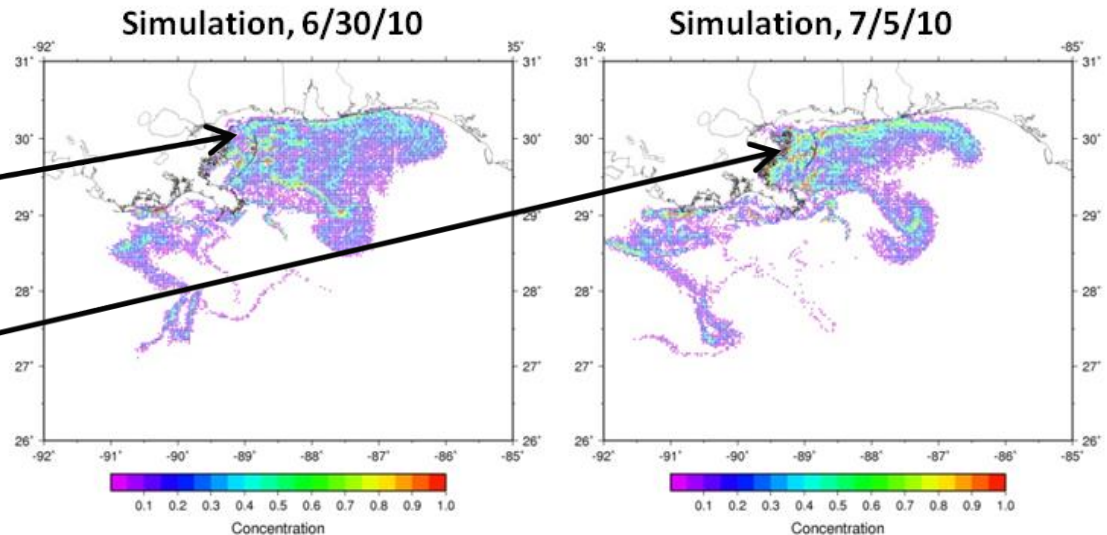
- *The influence of cyclones on the DWH oil spill*
- *Update on datasets to validate oil spill simulation*

The influence of cyclones on the Deepwater Horizon Oil Spill

Oil spill simulation from 6/20/10-7/10/10 using AMSEAS NCOM data

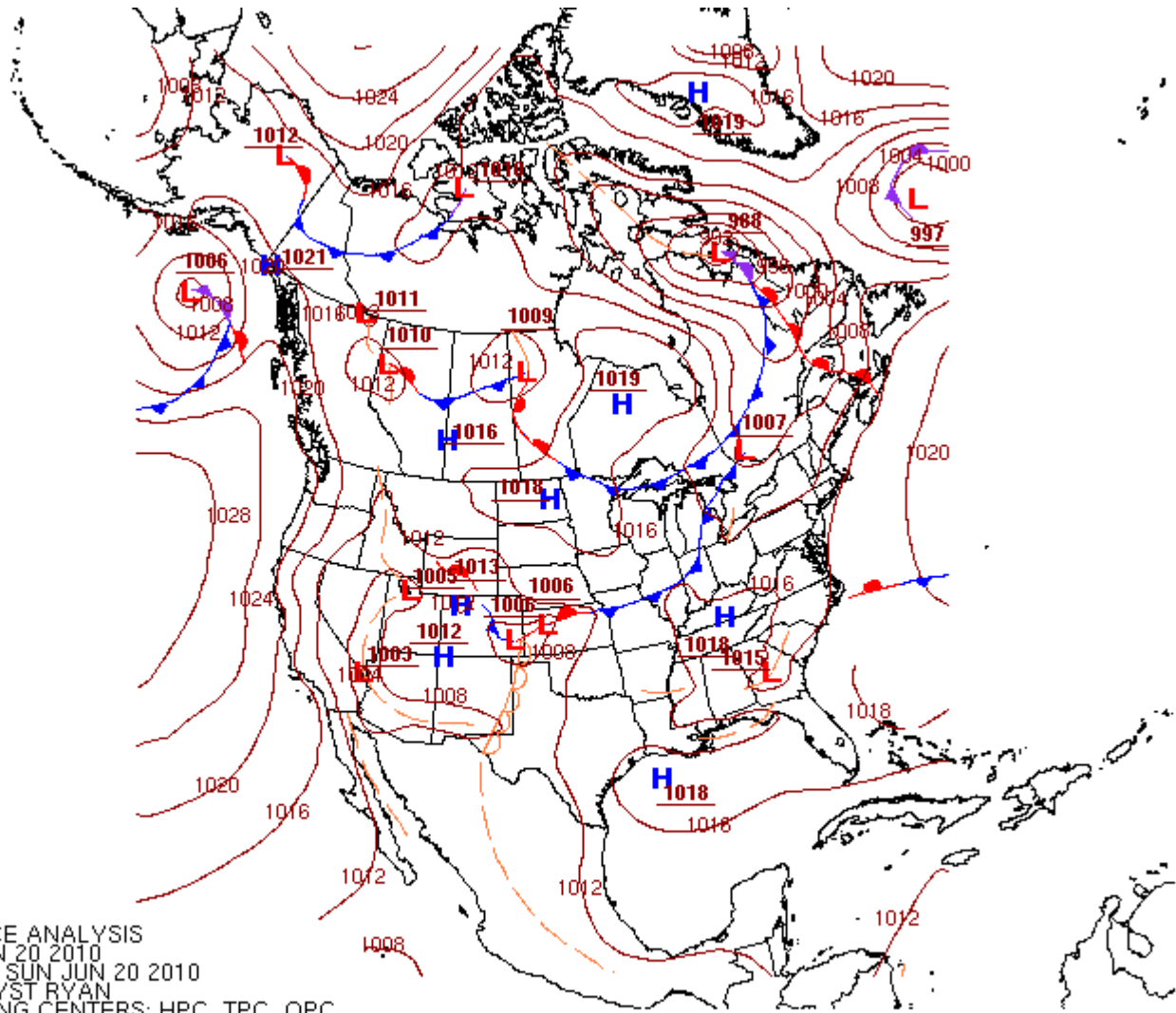


Note inshore movement of oil starting late June

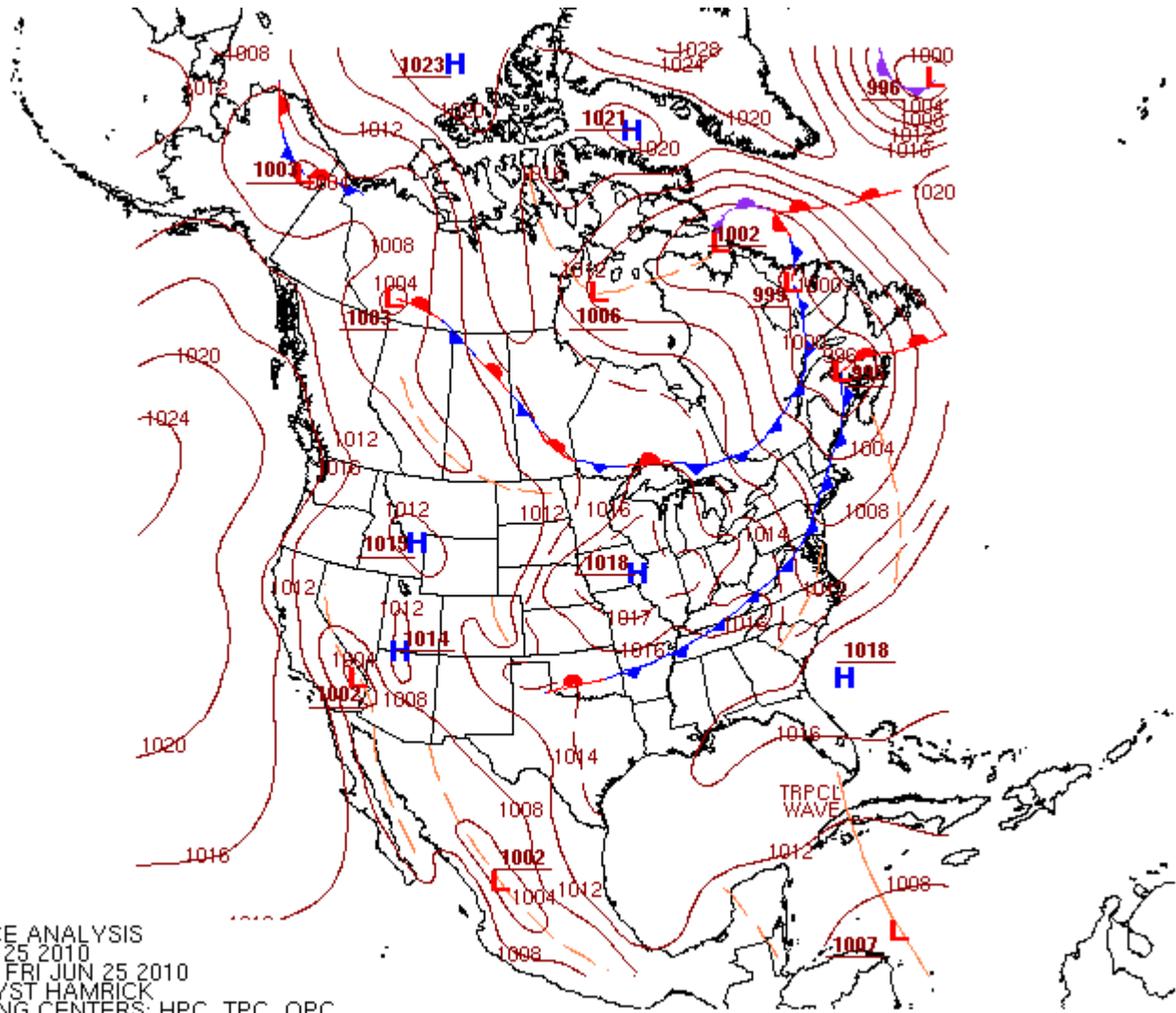


Model description

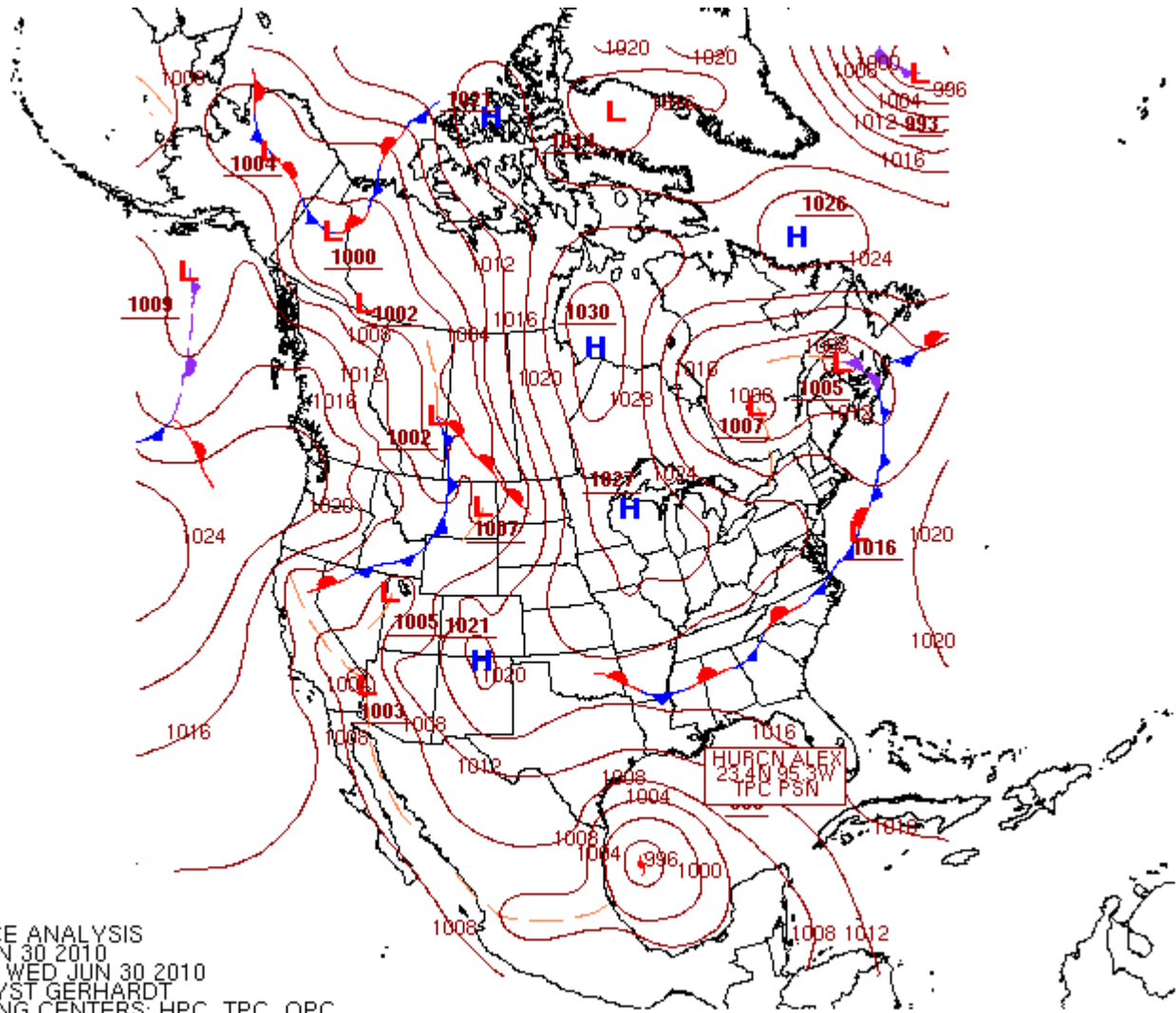
- Lagrangian particle tracker with random walk diffusion
- Input consisted
 - i. latitude and longitude parcel positions in the oil-contaminated area
 - ii. wind (validation show reasonably accurate with absolute errors of 1.4 ms^{-1} and 33 deg).
 - iii. Current (validation to be shown in this talk)
 - iv. array of pseudo-random numbers (from Mersenne Twister algorithm, initial seed from machine noise)
- New parcels were released damaged Macondo rig location at each timestep
- Twenty-five parcels were released at each position, and when combined with a $10 \text{ m}^2\text{s}^{-1}$ diffusion coefficient, resulted in a natural trajectory spread with time
- Initial positions based interpretation on
 - i. NASA MODIS
 - ii. SAR imagery from <http://www.cstars.miami.edu>
 - iii. NOAA/NESDIS Satellite Analysis Branch (SAB) experimental surface oil analysis products at <http://www.ssd.noaa.gov/PS/MPS/deepwater.html>
 - iv. NOAA's Office of Response and Restoration oil trajectory maps at <http://response.restoration.noaa.gov>
- Parcels advected at 80% of the ocean current speed and at 3% of the wind speed. Bilinear interpolation of wind and current applied from model grid to parcel location.



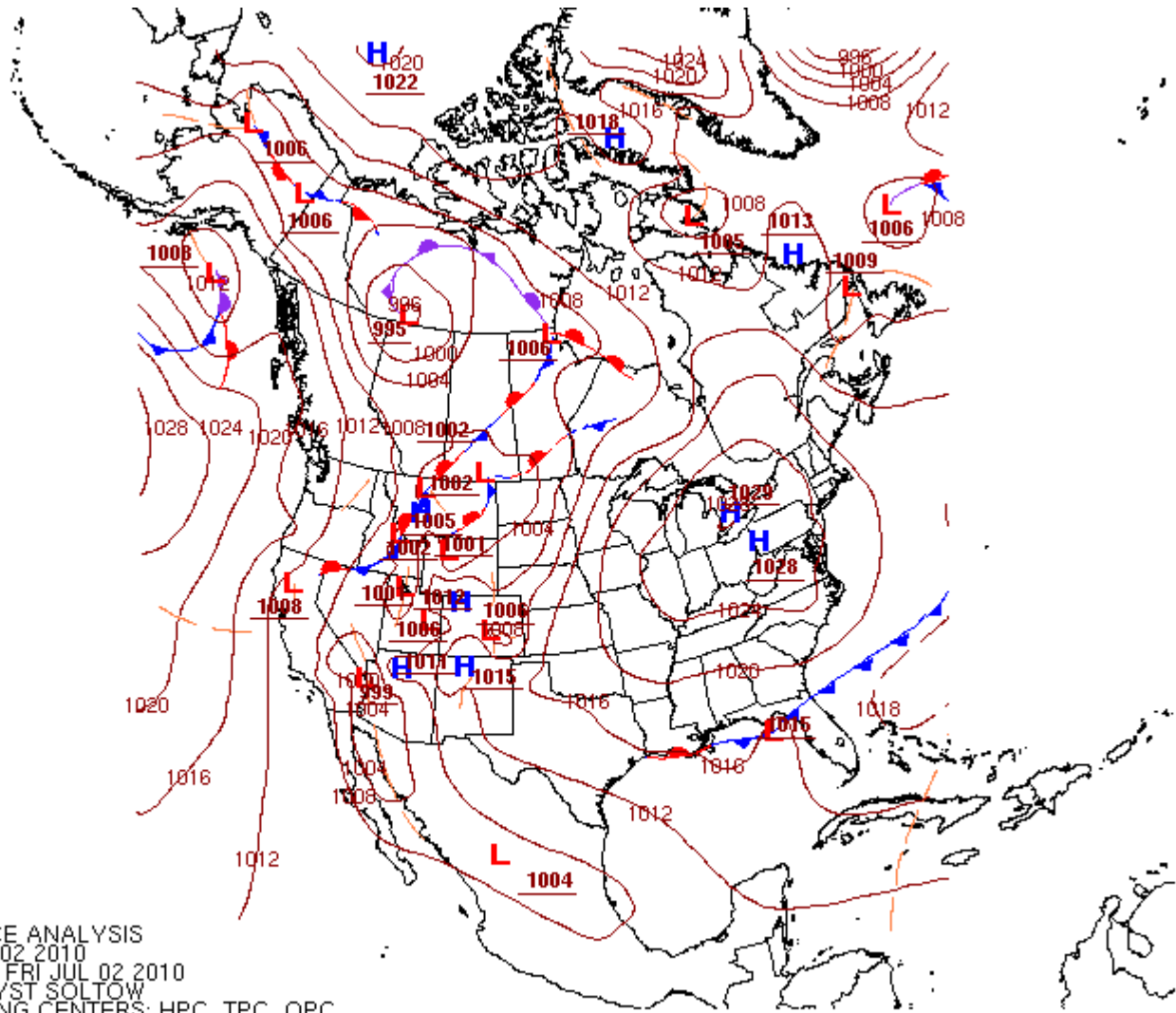
0000Z SURFACE ANALYSIS
 DATE: SUN JUN 20 2010
 ISSUED: 0128Z SUN JUN 20 2010
 BY HPC ANALYST RYAN
 COLLABORATING CENTERS: HPC, TPC, OPC



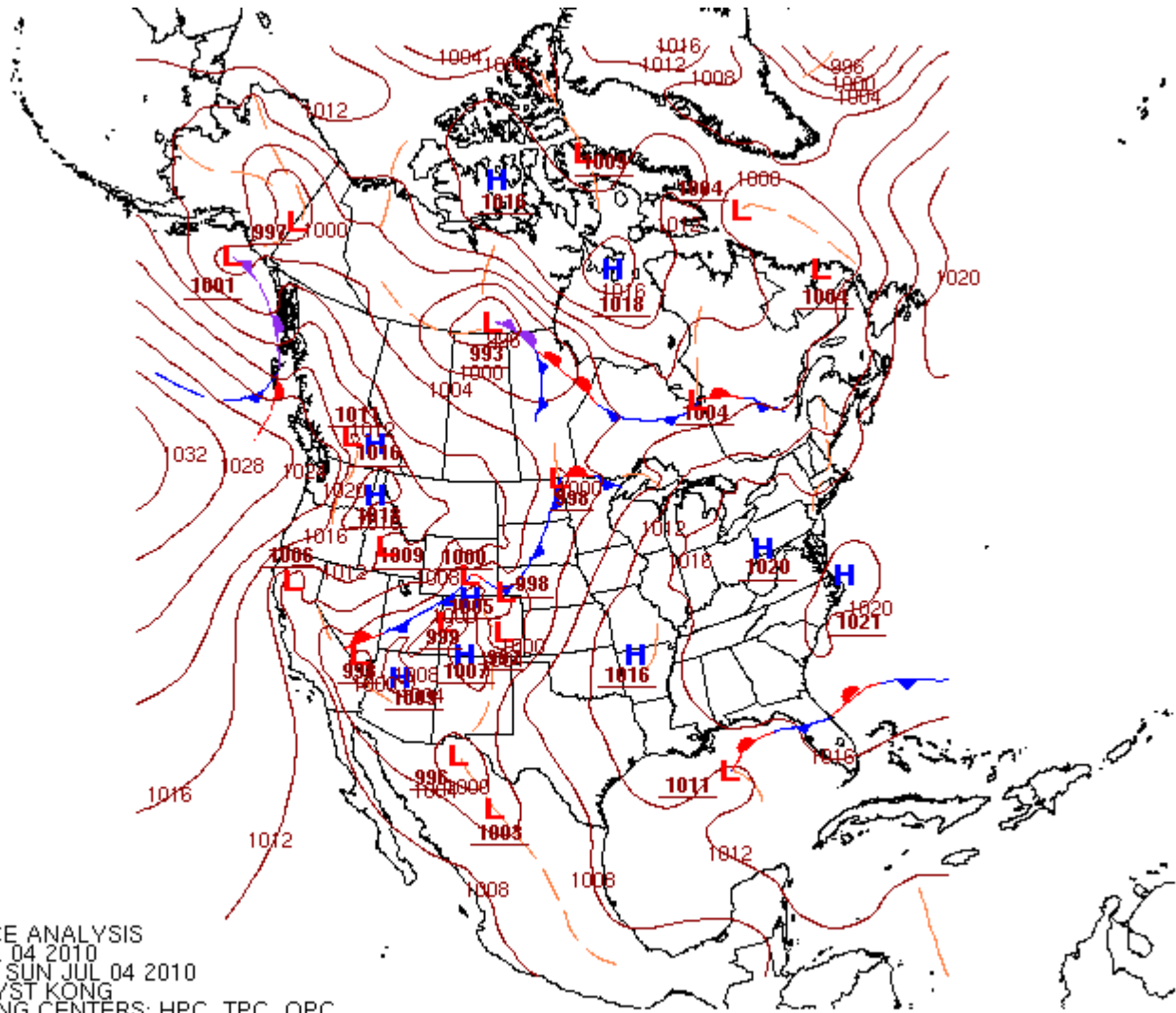
0000Z SURFACE ANALYSIS
 DATE: FRI JUN 25 2010
 ISSUED: 0128Z FRI JUN 25 2010
 BY HPC ANALYST HAMRICK
 COLLABORATING CENTERS: HPC, TPC, OPC



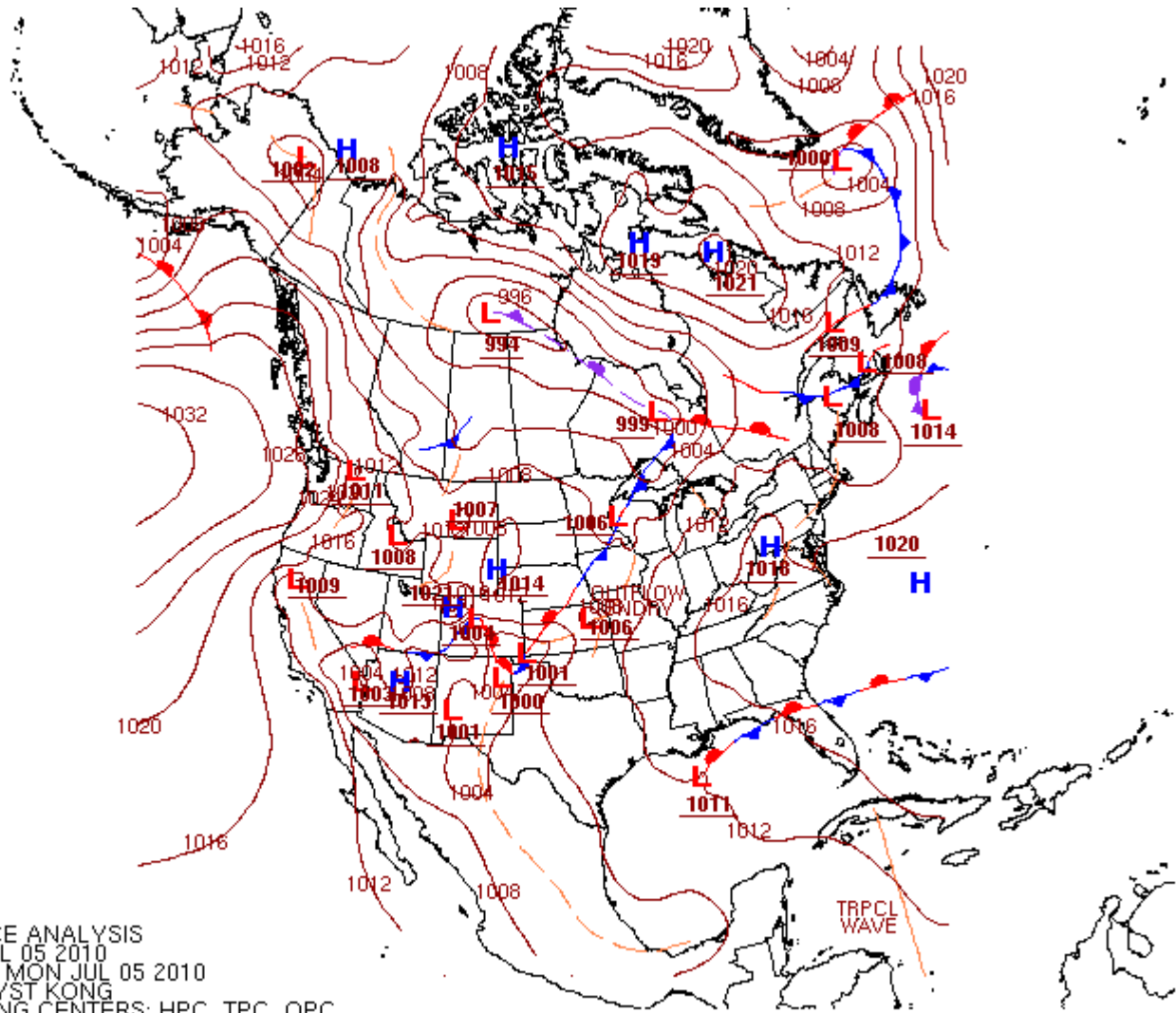
1200Z SURFACE ANALYSIS
 DATE: WED JUN 30 2010
 ISSUED: 1335Z WED JUN 30 2010
 BY HPC ANALYST GERHARDT
 COLLABORATING CENTERS: HPC, TPC, OPC



1200Z SURFACE ANALYSIS
 DATE: FRI JUL 02 2010
 ISSUED: 1333Z FRI JUL 02 2010
 BY HPC ANALYST SOLTOW
 COLLABORATING CENTERS: HPC, TPC, OPC

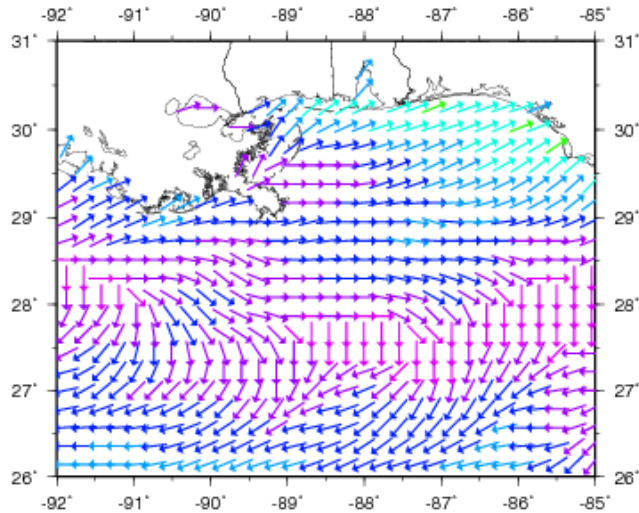


0000Z SURFACE ANALYSIS
 DATE: SUN JUL 04 2010
 ISSUED: 0130Z SUN JUL 04 2010
 BY HPC ANALYST KONG
 COLLABORATING CENTERS: HPC, TPC, OPC

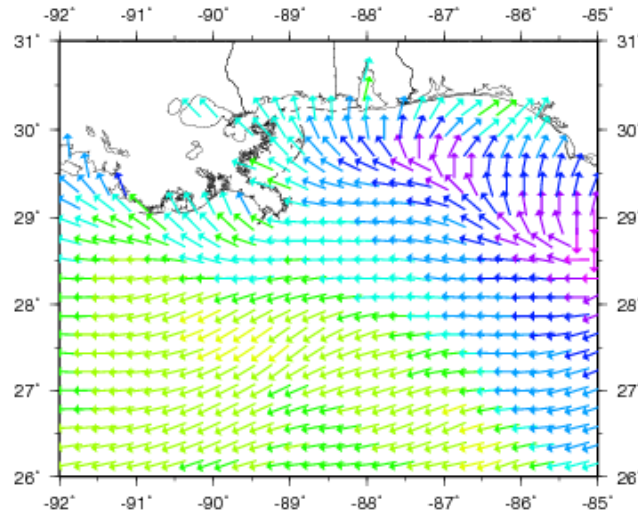


0000Z SURFACE ANALYSIS
 DATE: MON JUL 05 2010
 ISSUED: 0139Z MON JUL 05 2010
 BY HPC ANALYST KONG
 COLLABORATING CENTERS: HPC, TPC, OPC

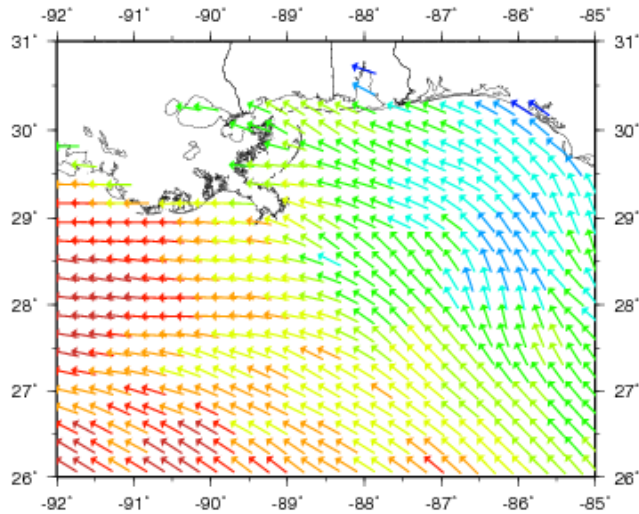
6/20/10



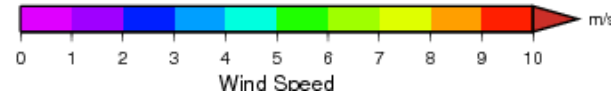
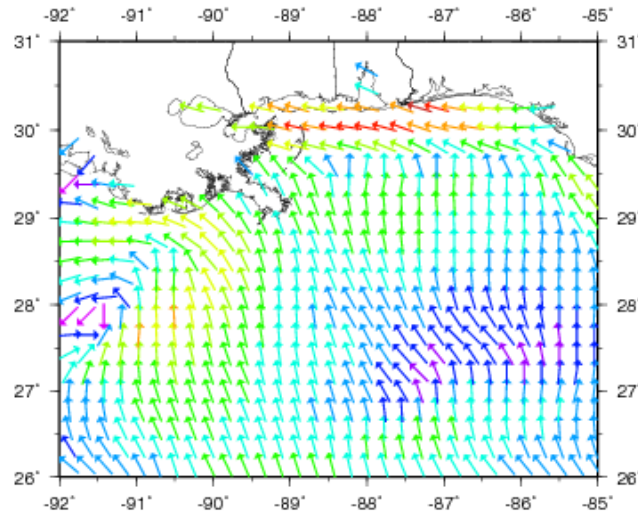
6/25/10

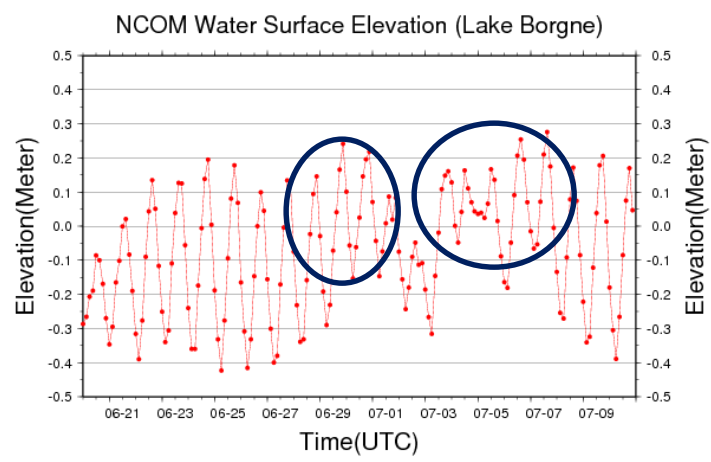
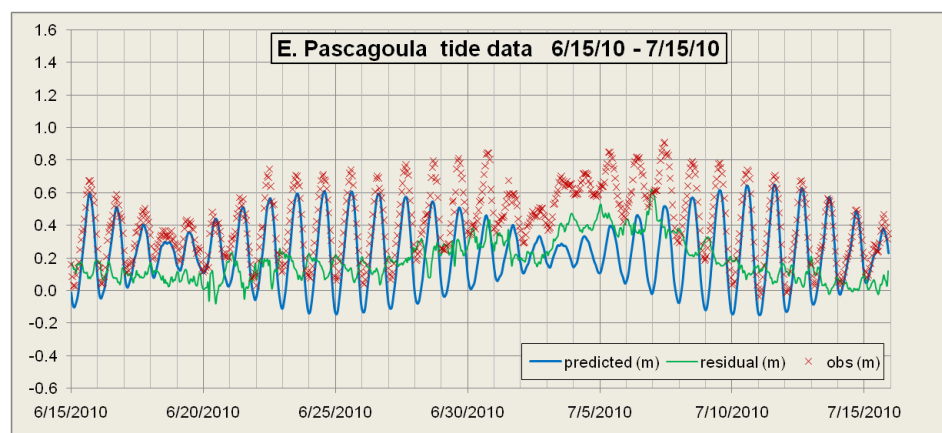
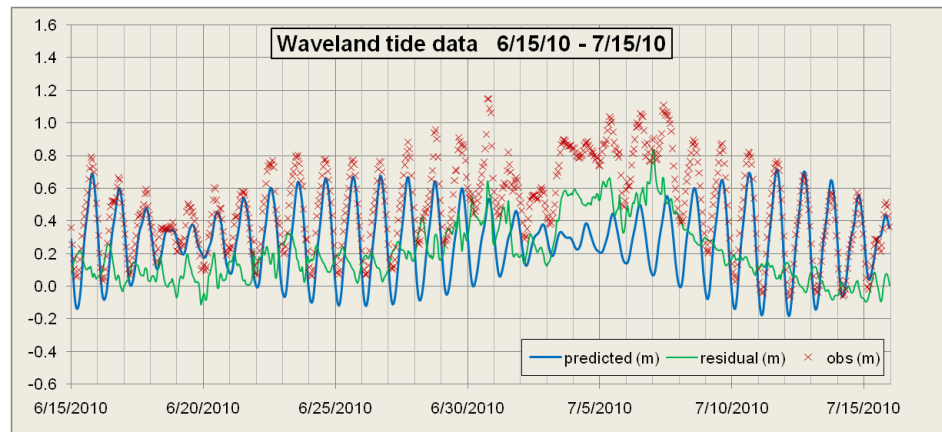
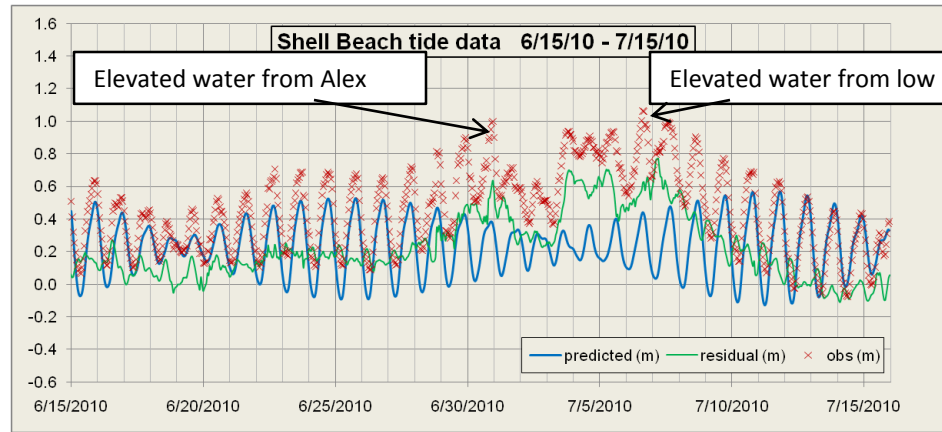
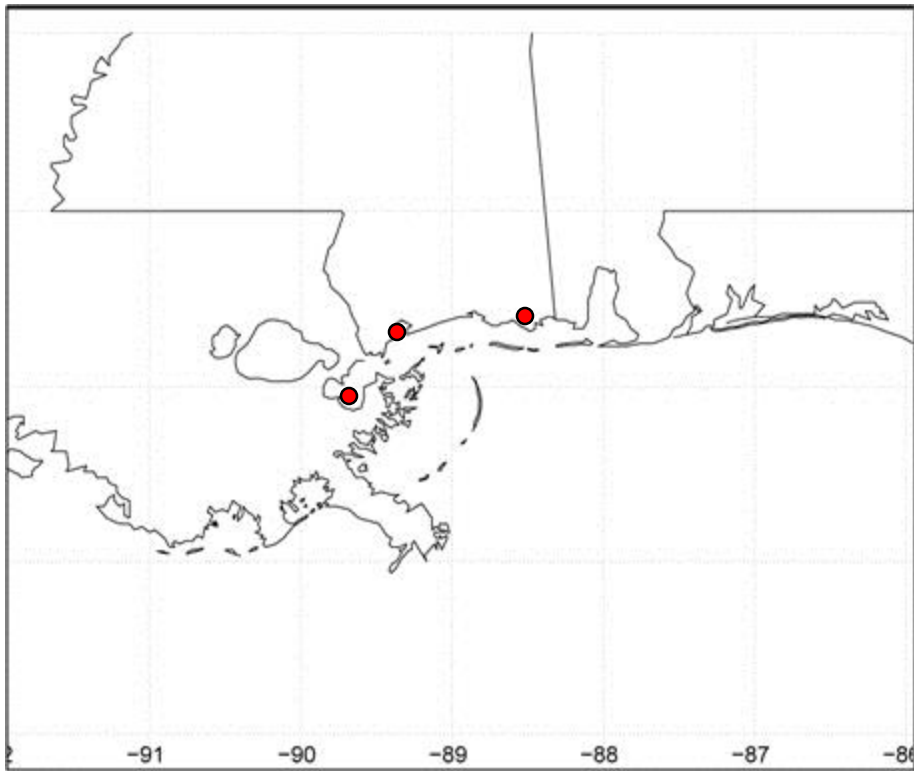


6/30/10

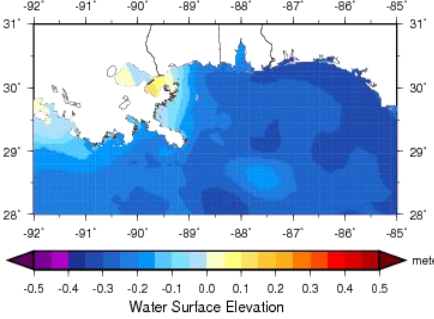


7/5/10

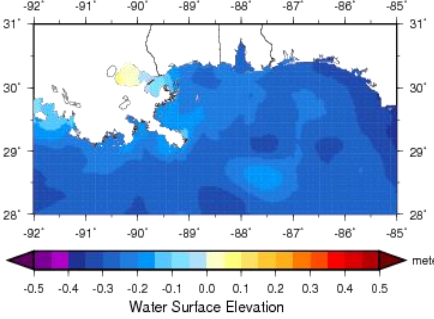




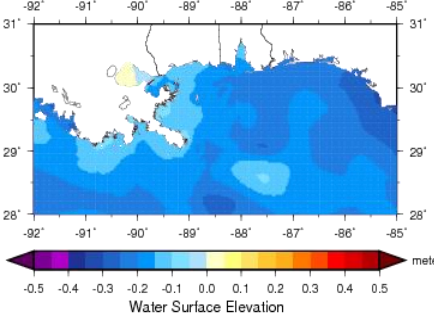
NCOM AMSEAS Water Sfc Elev 20100630 t00



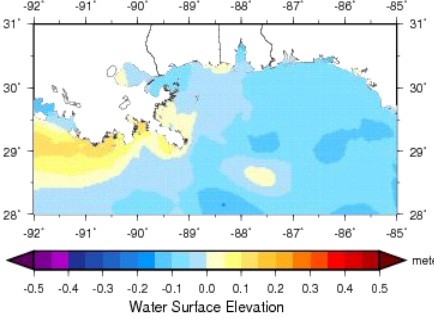
NCOM AMSEAS Water Sfc Elev 20100630 t03



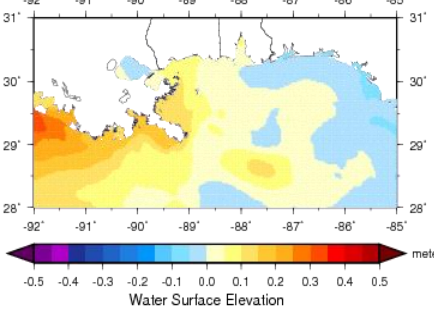
NCOM AMSEAS Water Sfc Elev 20100630 t06



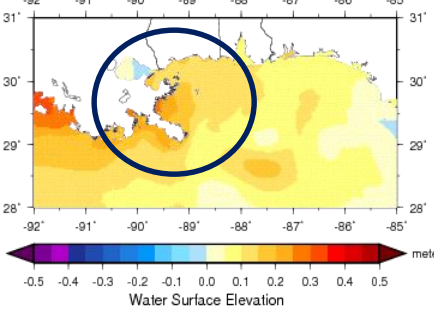
NCOM AMSEAS Water Sfc Elev 20100630 t09



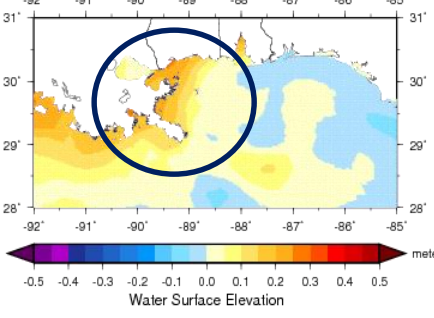
NCOM AMSEAS Water Sfc Elev 20100630 t12



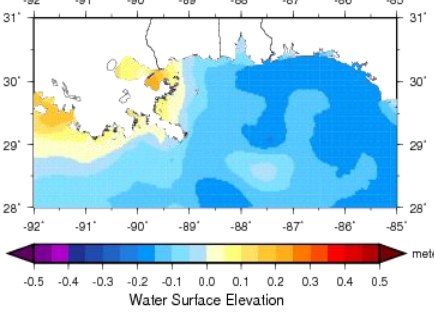
NCOM AMSEAS Water Sfc Elev 20100630 t15



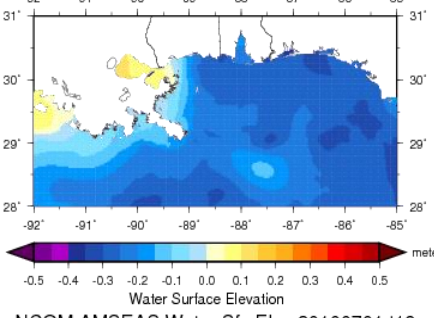
NCOM AMSEAS Water Sfc Elev 20100630 t18



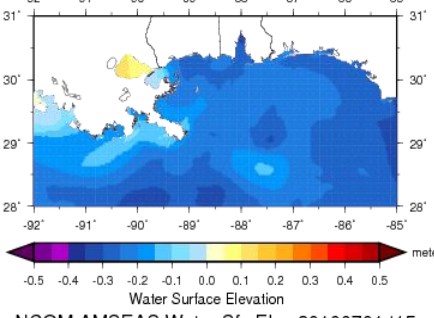
NCOM AMSEAS Water Sfc Elev 20100630 t21



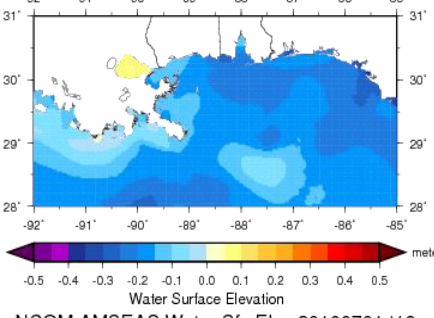
NCOM AMSEAS Water Sfc Elev 20100701 t00



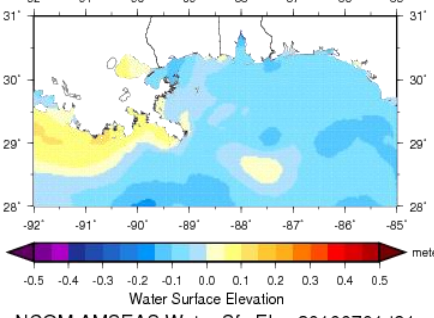
NCOM AMSEAS Water Sfc Elev 20100701 t03



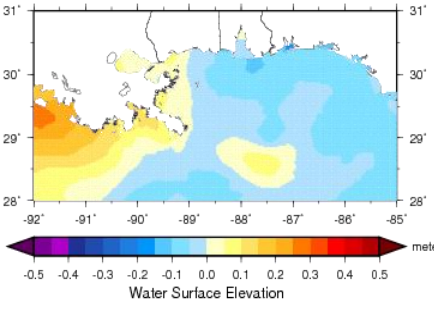
NCOM AMSEAS Water Sfc Elev 20100701 t06



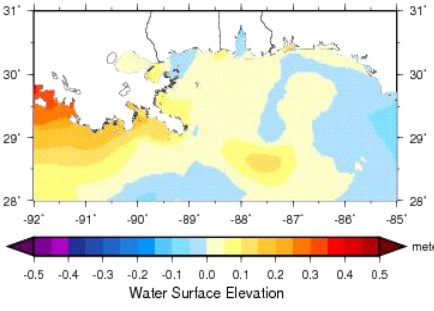
NCOM AMSEAS Water Sfc Elev 20100701 t09



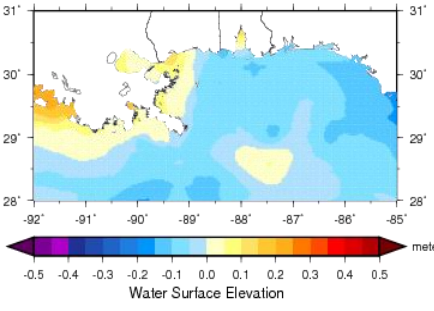
NCOM AMSEAS Water Sfc Elev 20100701 t12



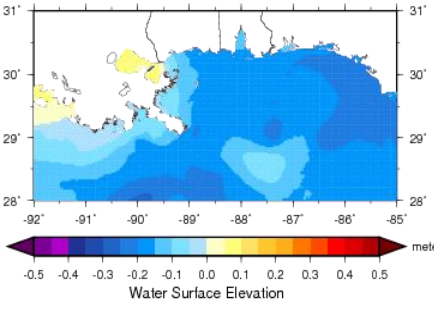
NCOM AMSEAS Water Sfc Elev 20100701 t15



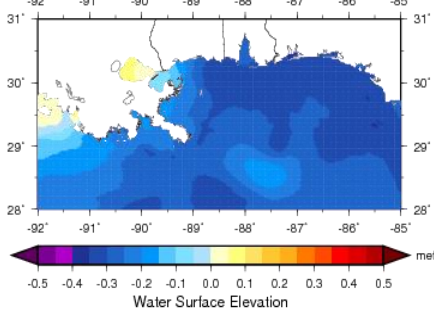
NCOM AMSEAS Water Sfc Elev 20100701 t18



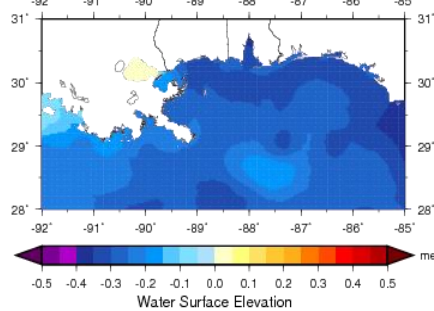
NCOM AMSEAS Water Sfc Elev 20100701 t21



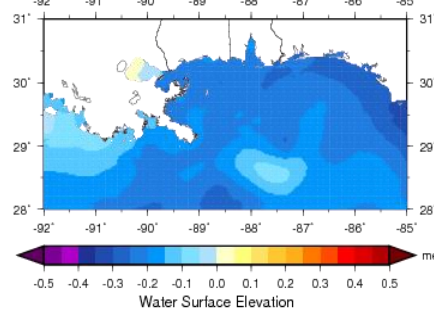
NCOM AMSEAS Water Sfc Elev 20100702 t00



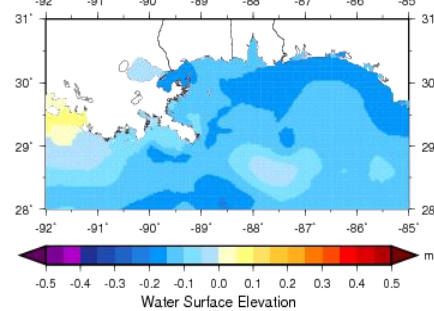
NCOM AMSEAS Water Sfc Elev 20100702 t03



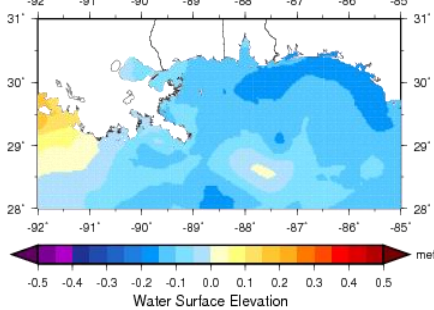
NCOM AMSEAS Water Sfc Elev 20100702 t06



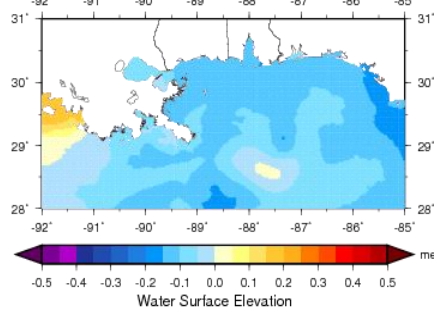
NCOM AMSEAS Water Sfc Elev 20100702 t09



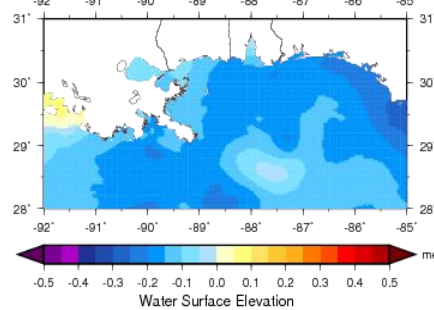
NCOM AMSEAS Water Sfc Elev 20100702 t12



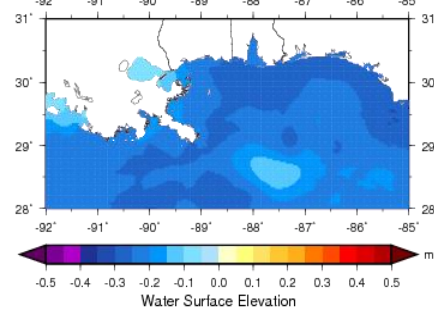
NCOM AMSEAS Water Sfc Elev 20100702 t15



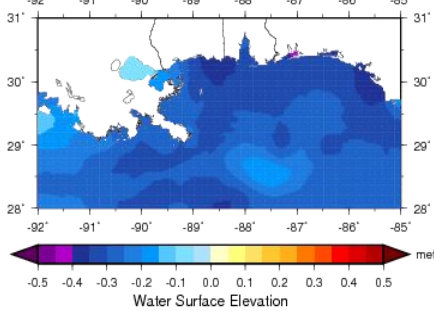
NCOM AMSEAS Water Sfc Elev 20100702 t18



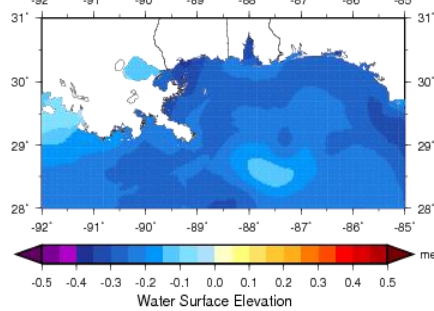
NCOM AMSEAS Water Sfc Elev 20100702 t21



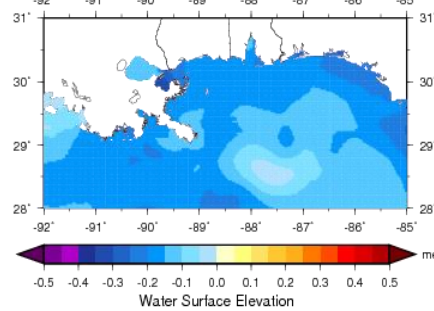
NCOM AMSEAS Water Sfc Elev 20100703 t00



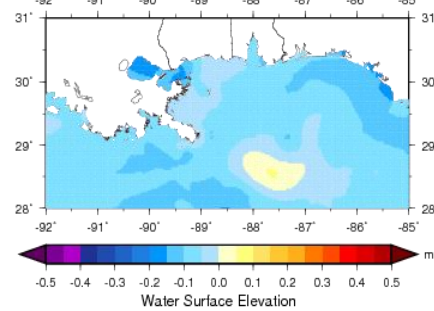
NCOM AMSEAS Water Sfc Elev 20100703 t03



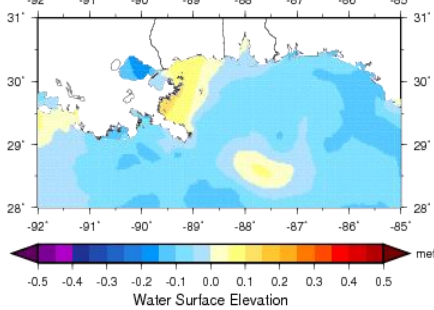
NCOM AMSEAS Water Sfc Elev 20100703 t06



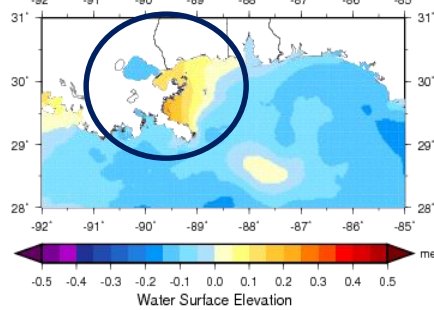
NCOM AMSEAS Water Sfc Elev 20100703 t09



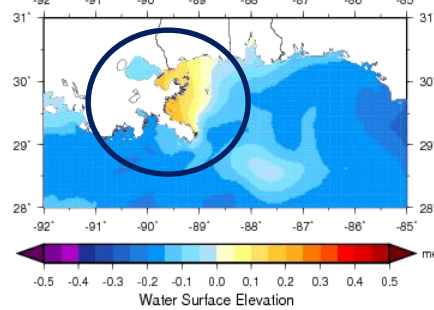
NCOM AMSEAS Water Sfc Elev 20100703 t12



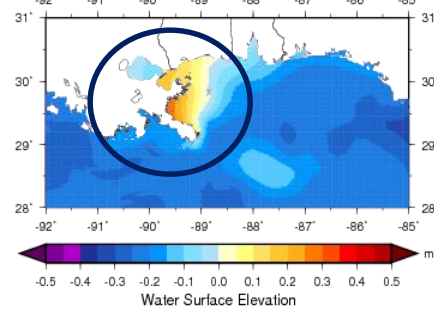
NCOM AMSEAS Water Sfc Elev 20100703 t15



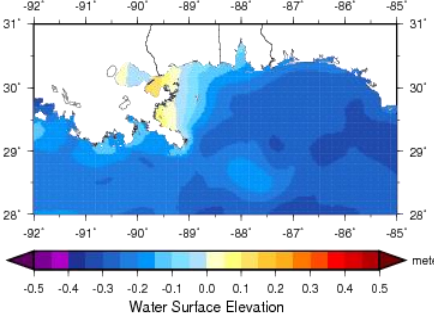
NCOM AMSEAS Water Sfc Elev 20100703 t18



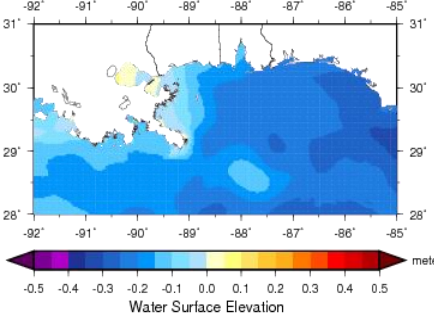
NCOM AMSEAS Water Sfc Elev 20100703 t21



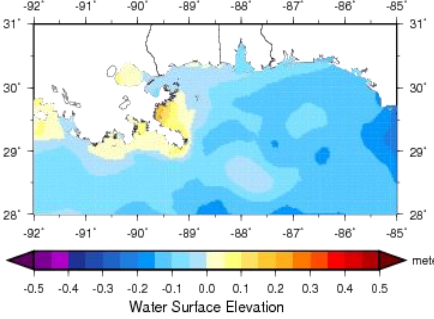
NCOM AMSEAS Water Sfc Elev 20100704 t00



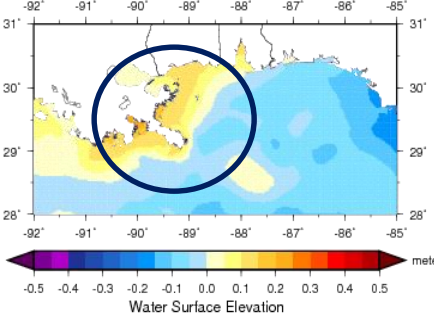
NCOM AMSEAS Water Sfc Elev 20100704 t03



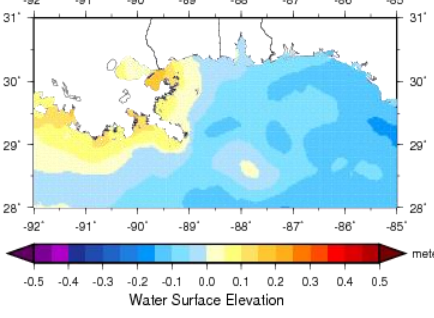
NCOM AMSEAS Water Sfc Elev 20100704 t06



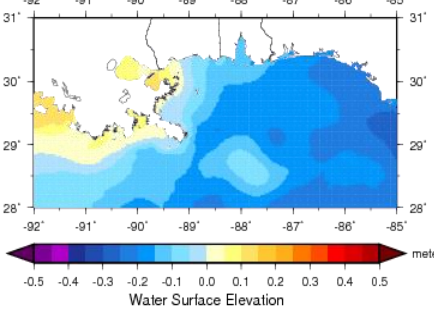
NCOM AMSEAS Water Sfc Elev 20100704 t09



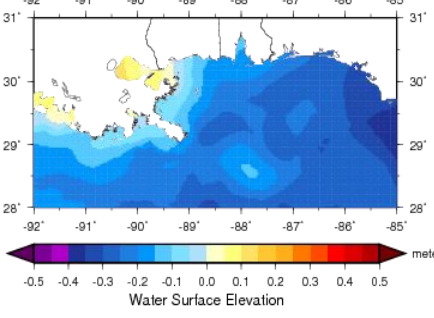
NCOM AMSEAS Water Sfc Elev 20100704 t12



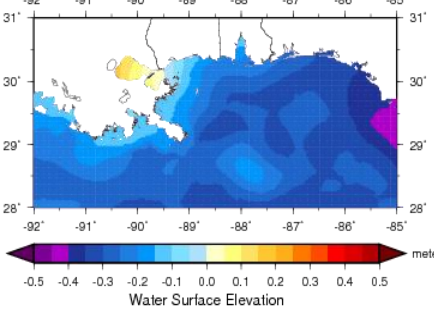
NCOM AMSEAS Water Sfc Elev 20100704 t15



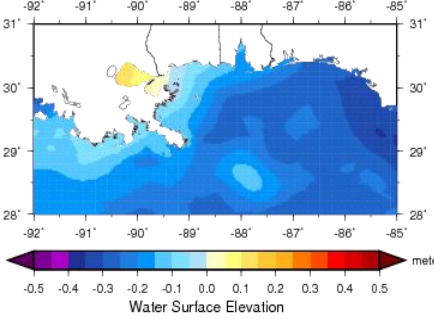
NCOM AMSEAS Water Sfc Elev 20100704 t18



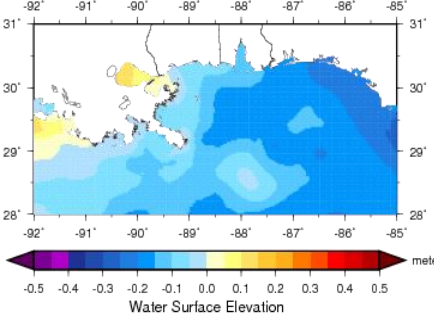
NCOM AMSEAS Water Sfc Elev 20100704 t21



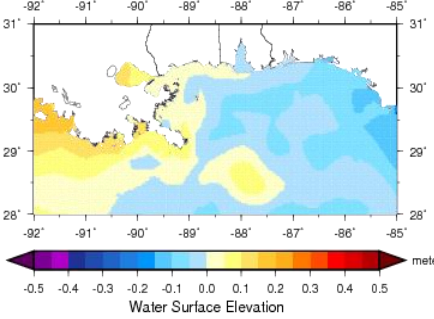
NCOM AMSEAS Water Sfc Elev 20100705 t00



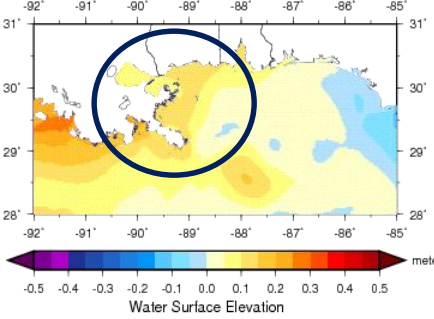
NCOM AMSEAS Water Sfc Elev 20100705 t03



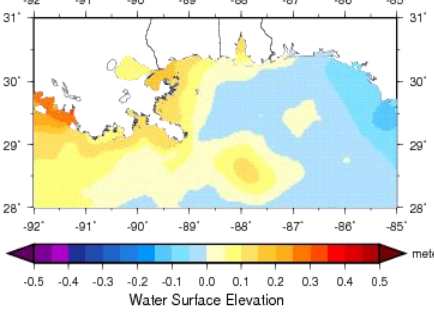
NCOM AMSEAS Water Sfc Elev 20100705 t06



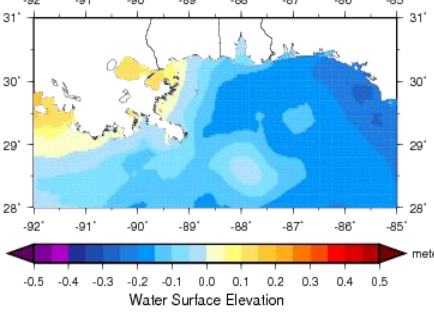
NCOM AMSEAS Water Sfc Elev 20100705 t09



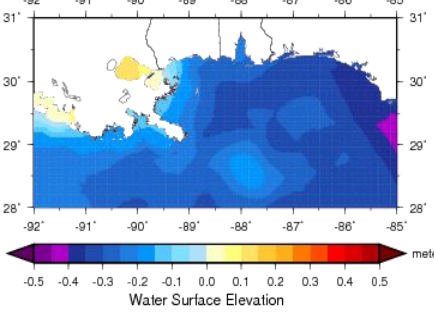
NCOM AMSEAS Water Sfc Elev 20100705 t12



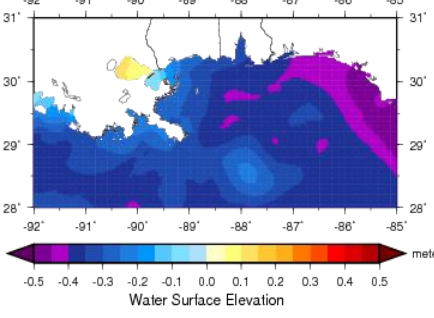
NCOM AMSEAS Water Sfc Elev 20100705 t15



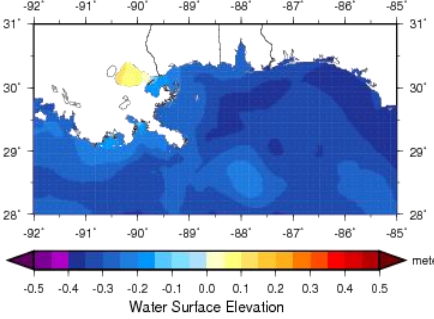
NCOM AMSEAS Water Sfc Elev 20100705 t18



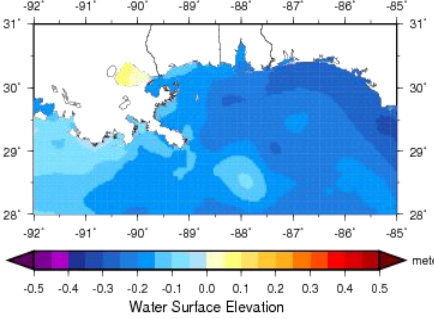
NCOM AMSEAS Water Sfc Elev 20100705 t21



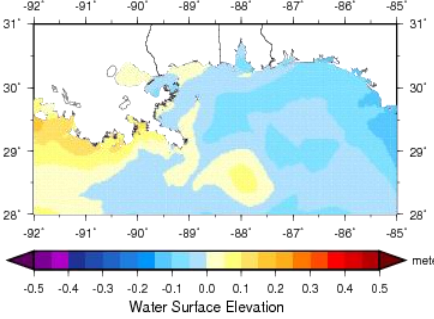
NCOM AMSEAS Water Sfc Elev 20100706 t00



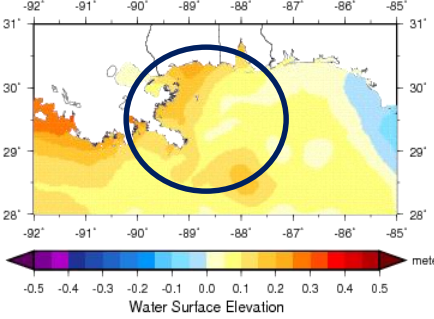
NCOM AMSEAS Water Sfc Elev 20100706 t03



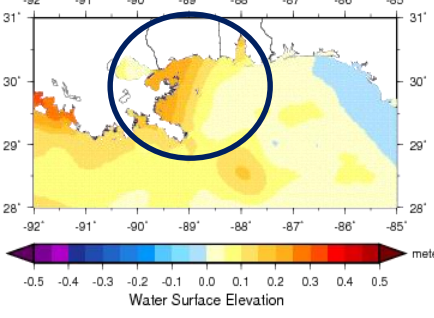
NCOM AMSEAS Water Sfc Elev 20100706 t06



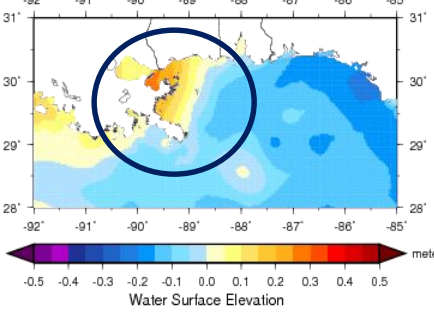
NCOM AMSEAS Water Sfc Elev 20100706 t09



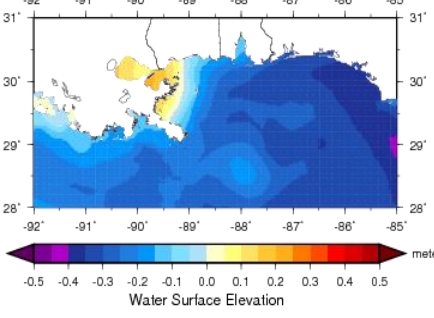
NCOM AMSEAS Water Sfc Elev 20100706 t12



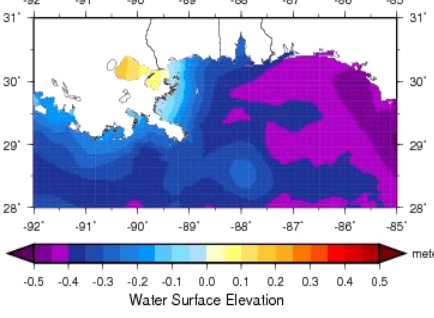
NCOM AMSEAS Water Sfc Elev 20100706 t15



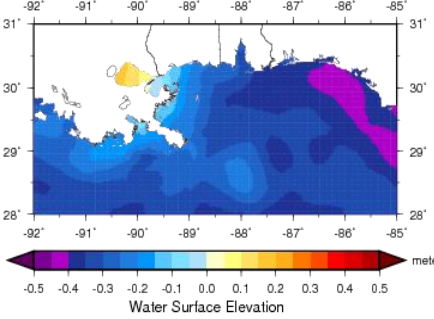
NCOM AMSEAS Water Sfc Elev 20100706 t18



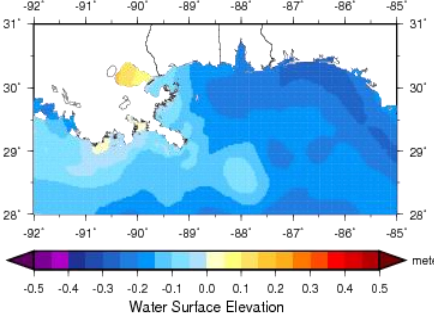
NCOM AMSEAS Water Sfc Elev 20100706 t21



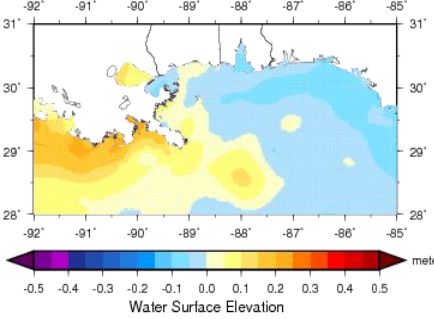
NCOM AMSEAS Water Sfc Elev 20100707 t00



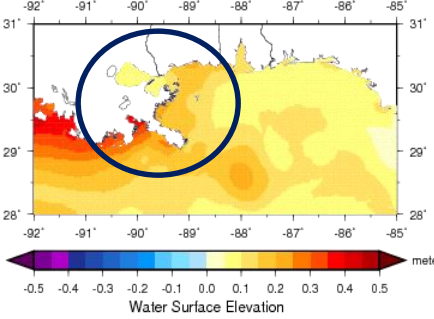
NCOM AMSEAS Water Sfc Elev 20100707 t03



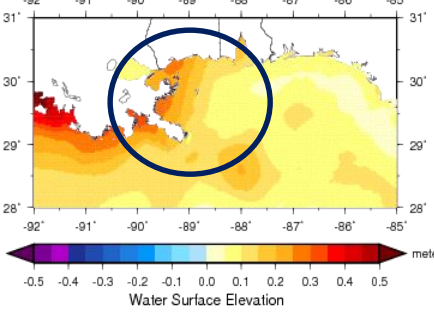
NCOM AMSEAS Water Sfc Elev 20100707 t06



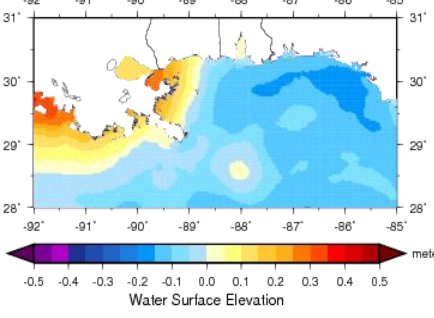
NCOM AMSEAS Water Sfc Elev 20100707 t09



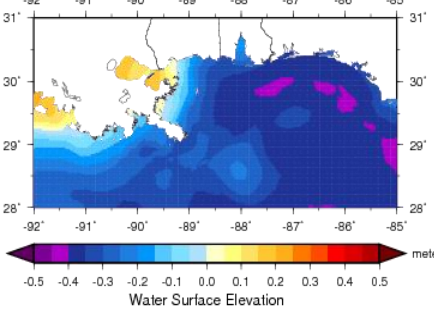
NCOM AMSEAS Water Sfc Elev 20100707 t12



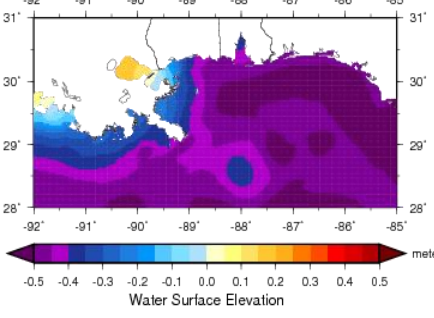
NCOM AMSEAS Water Sfc Elev 20100707 t15



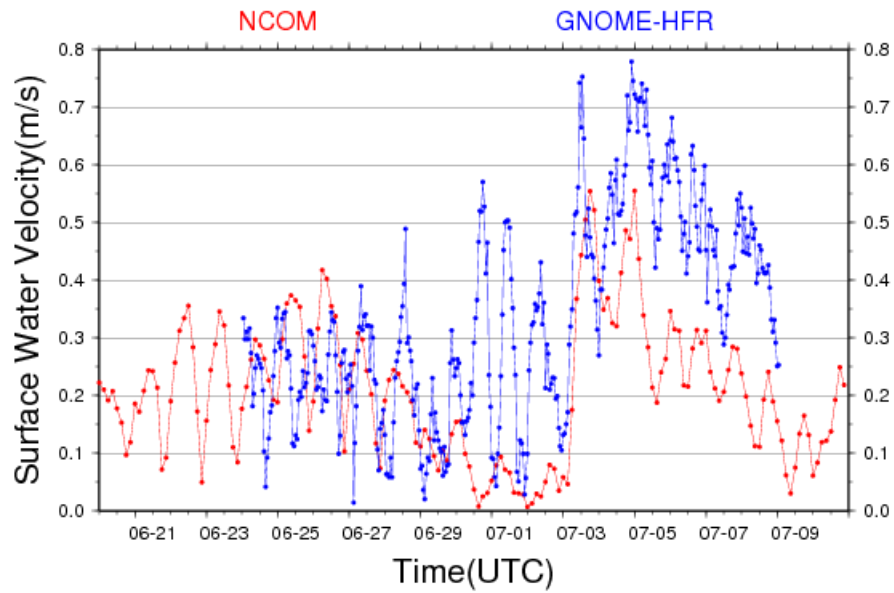
NCOM AMSEAS Water Sfc Elev 20100707 t18



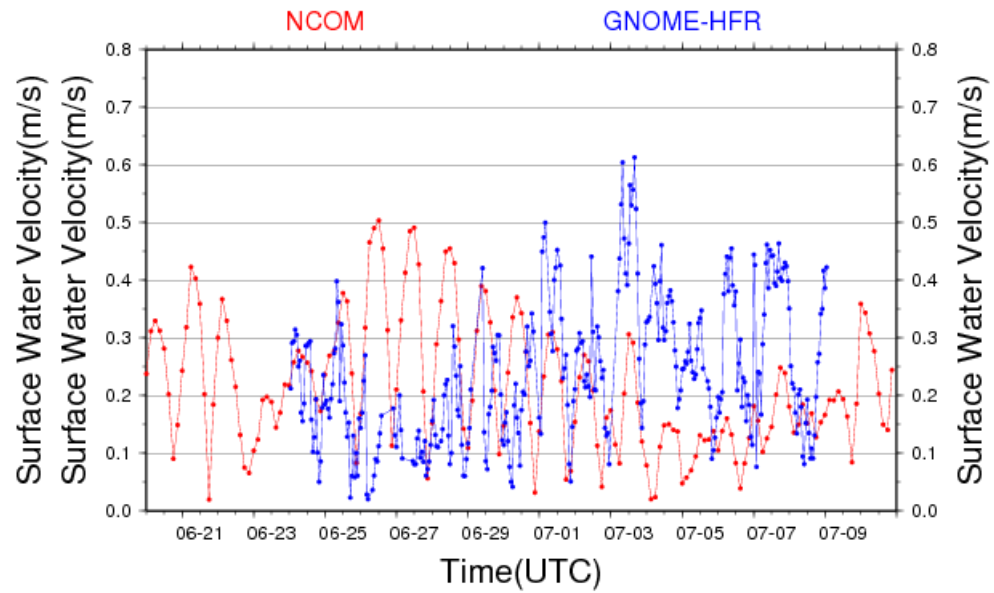
NCOM AMSEAS Water Sfc Elev 20100707 t21



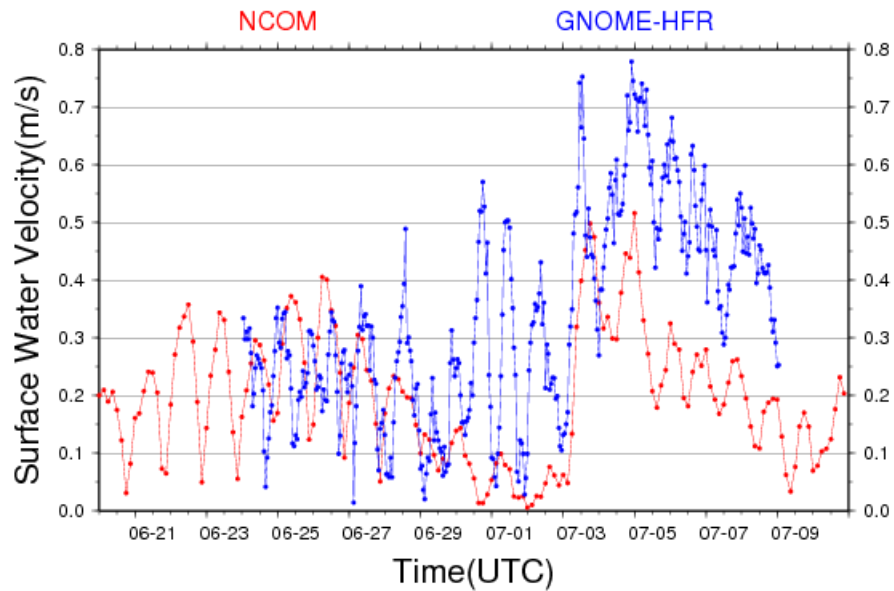
NCOM(0m) vs GNOME-HFR at -88.006561_30.002024



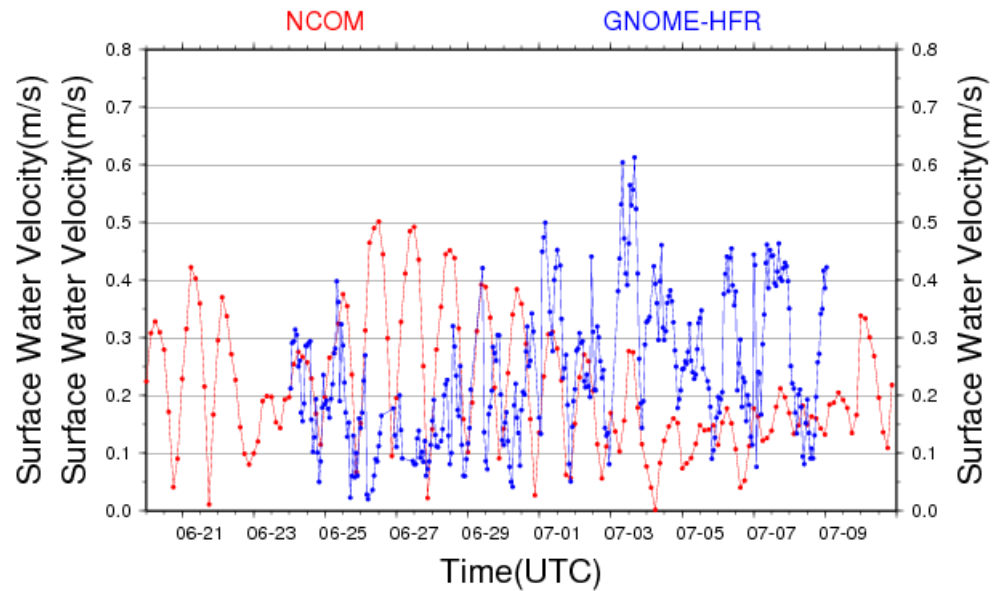
NCOM(0m) vs GNOME-HFR at -86.497589_30.002024



NCOM(2m) vs GNOME-HFR at -88.006561_30.002024



NCOM(2m) vs GNOME-HFR at -86.497589_30.002024



Summary

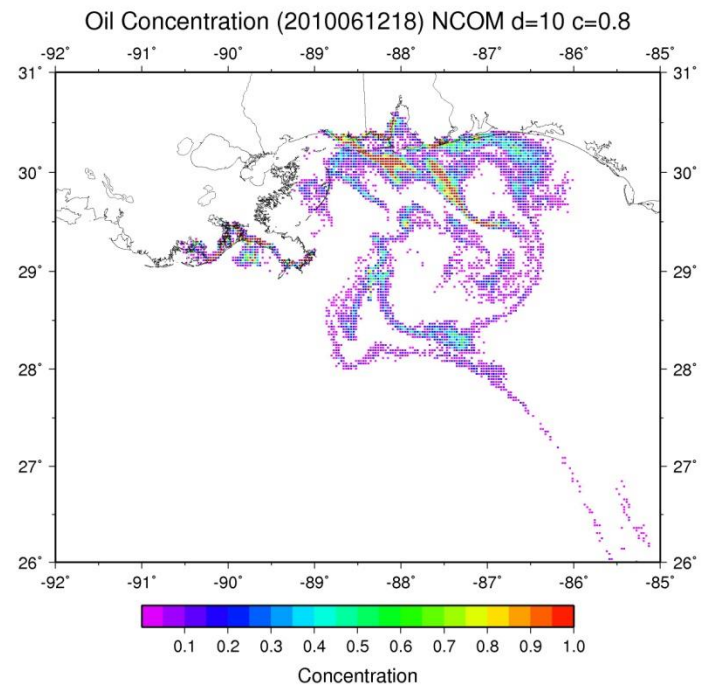
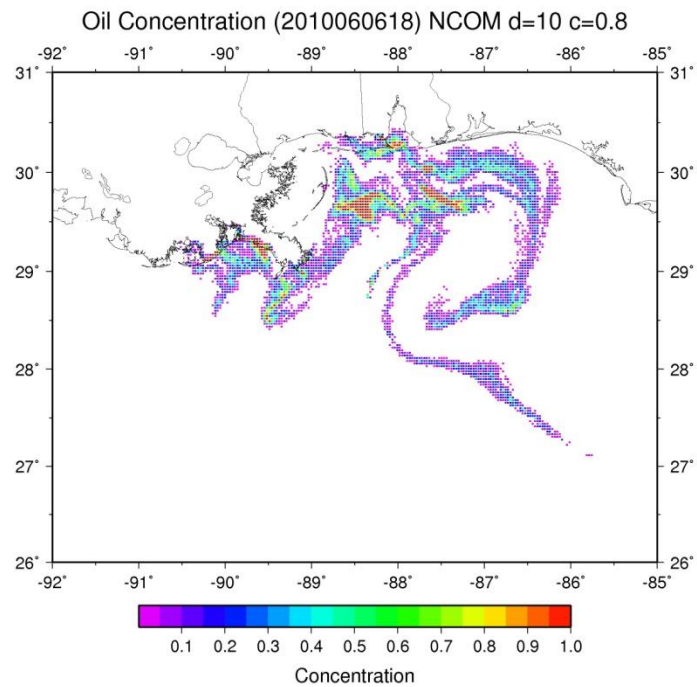
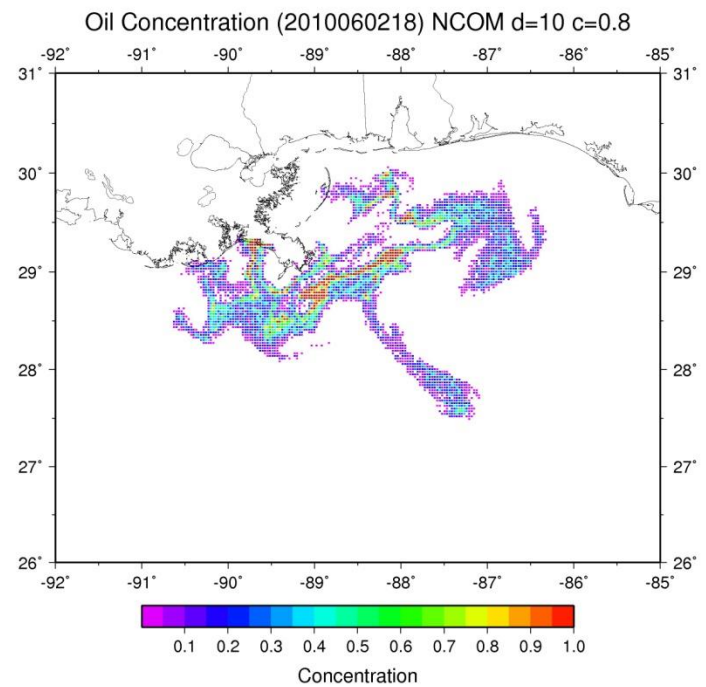
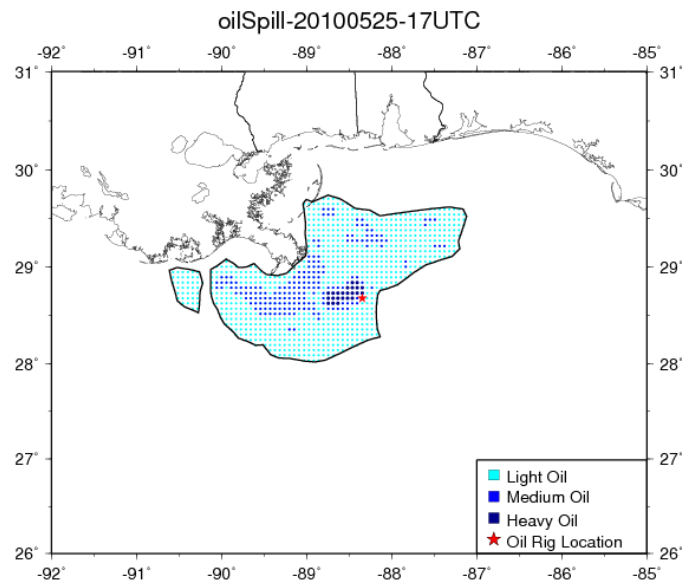
- Oil transport mostly governed by ocean currents
- However, surge events associated with tropical cyclones and non-tropical lows can push oil far into the marsh system
- Difficult to know if a hurricane landfall would have been catastrophic
 - Hurricane tend to flush the ecosystem of pollutants
 - But the potential of inland pollution existed. Our ADCIRC simulations (not shown) suggested deep movement of oil into the marsh system
 - Fortunately, no hurricane landfall occurred.

Merging of Oil Datasets

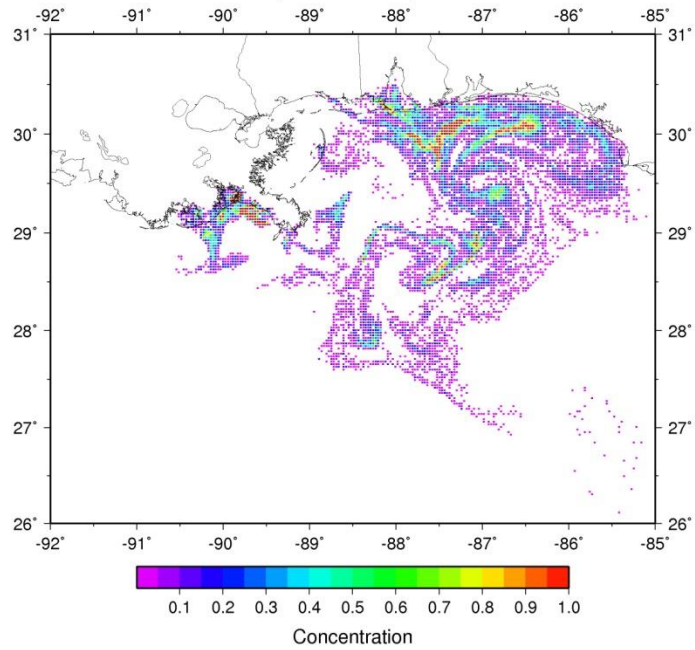
- Shoreline Cleanup and Assessment Technique (SCAT) datasets
- State DEQs
- Louisiana Bucket Brigade
- Lake Pontchartrain Basin Foundation
- Investigating other potential datasets

Original purpose is to provide validation against the oil spill model after dispersion, emulsification, and evaporation/dissolution terms are added.

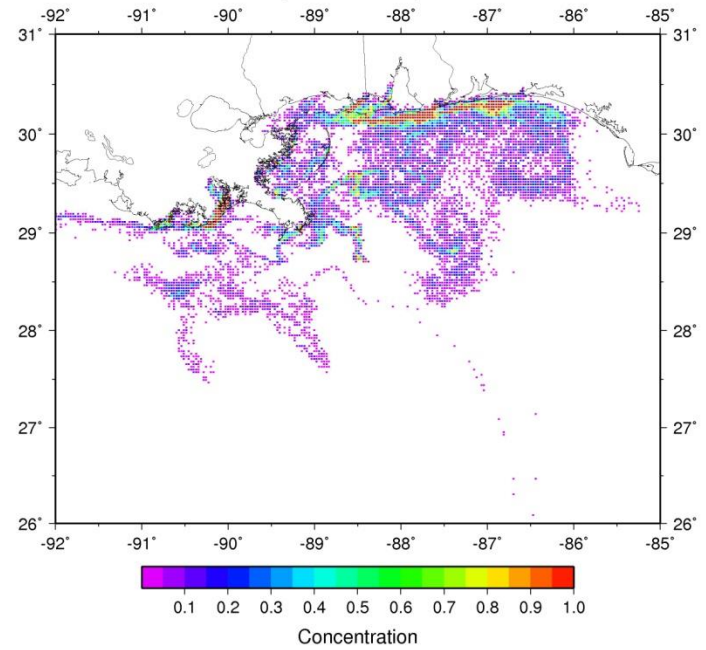
However, it should be beneficial for other DWH research endeavors.



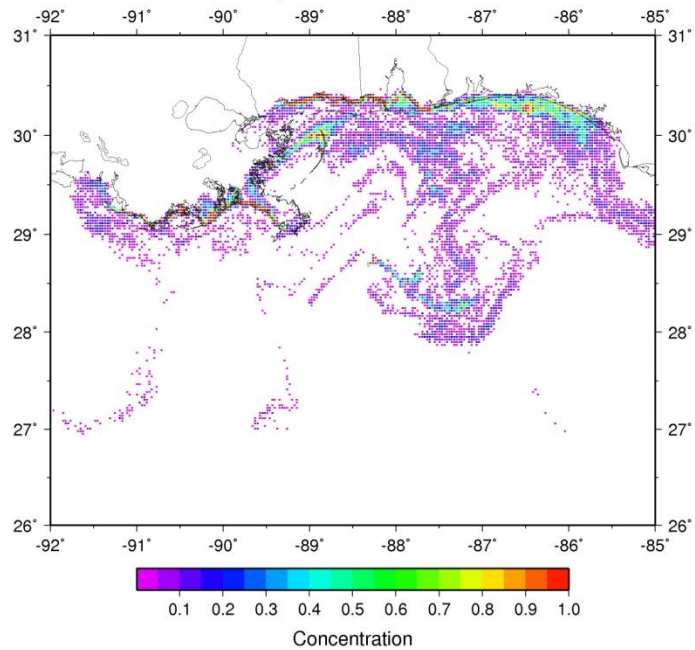
Oil Concentration (2010062118) NCOM d=10 c=0.8



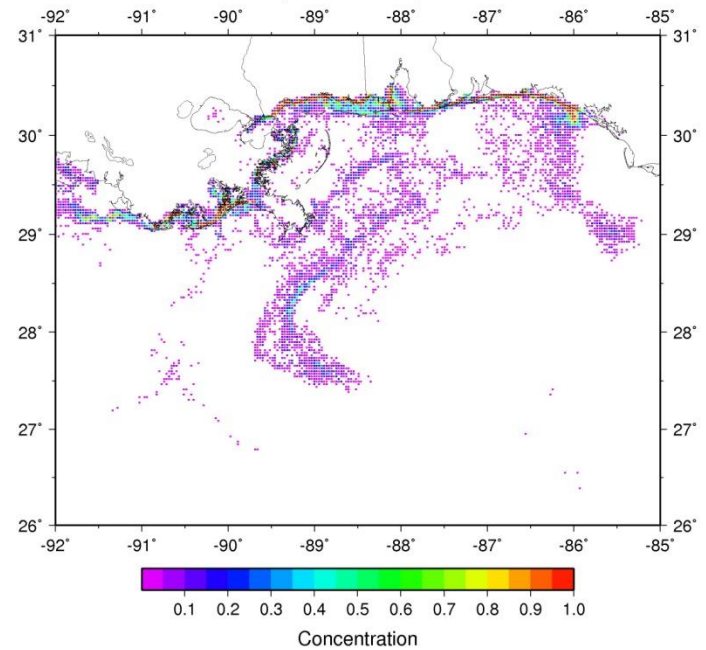
Oil Concentration (2010070318) NCOM d=10 c=0.8



Oil Concentration (2010071418) NCOM d=10 c=0.8

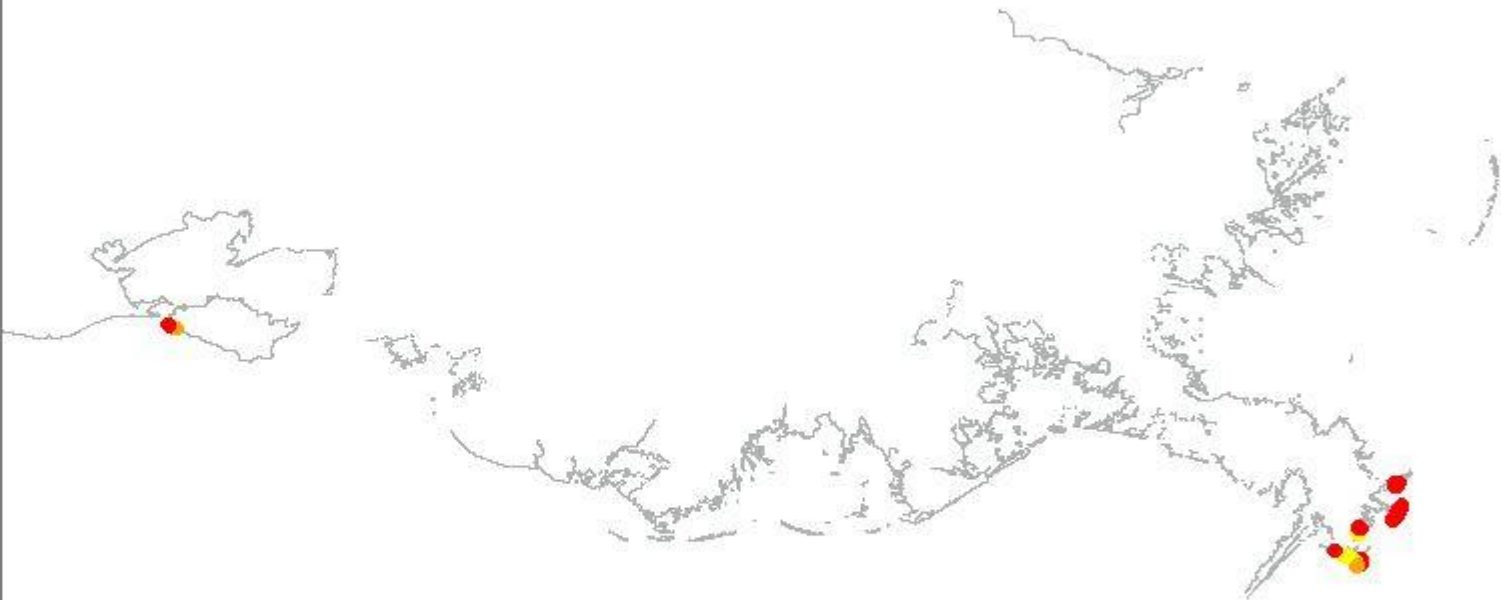
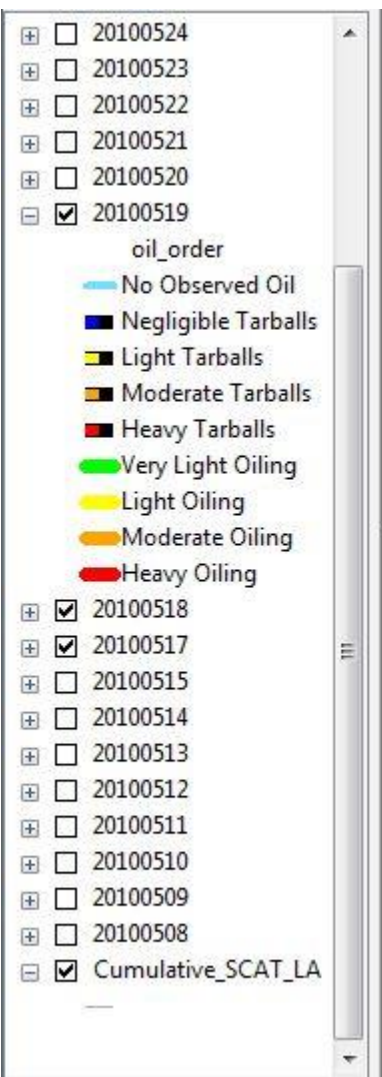


Oil Concentration (2010072618) NCOM d=10 c=0.8



SCAT data

- The SCAT teams performed survey of affected shorelines and collected data on shoreline oiling conditions
- MS-AL SCAT data very coarse and only a few days. Not useful
- LA SCAT data covers most of the oil spill and ample datapoints
 - Spreadsheet available and contains metadata
 - However, many temporal data “holes” exist in different regions. This problem is common for all the datasets, and is the motivation for compositing all the datasets



- 20100524
- 20100523
- 20100522
- oil_order
- No Observed Oil
- Negligible Tarballs
- Light Tarballs
- Moderate Tarballs
- Heavy Tarballs
- Very Light Oiling
- Light Oiling
- Moderate Oiling
- Heavy Oiling
- 20100521
- 20100520
- 20100519
- 20100518
- 20100517
- 20100515
- 20100514
- 20100513
- 20100512
- 20100511
- 20100510
- 20100509
- 20100508
- Cumulative_SCAT_LA



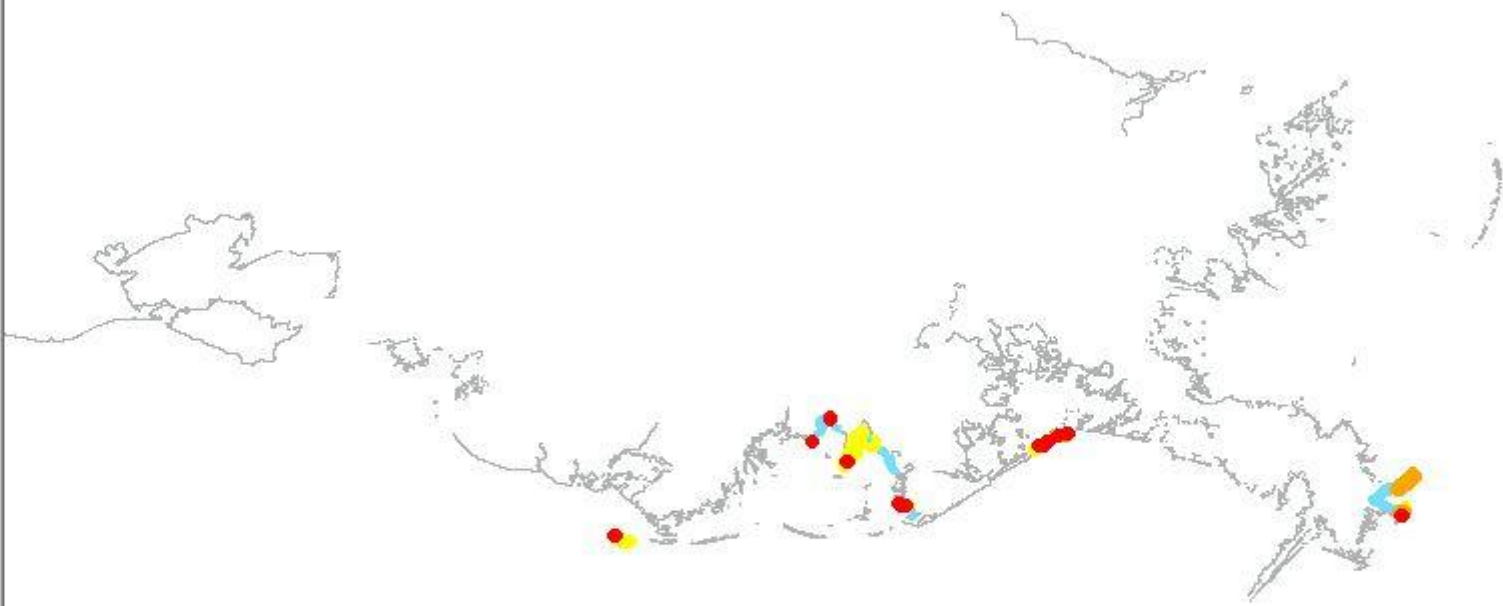
Layers

- 20100531
- 20100530
- 20100529
- 20100528
- 20100527
- 20100526
- 20100525

oil_order

- No Observed Oil
- Negligible Tarballs
- Light Tarballs
- Moderate Tarballs
- Heavy Tarballs
- Very Light Oiling
- Light Oiling
- Moderate Oiling
- Heavy Oiling










- 20100524
- 20100523
- 20100522
- 20100521
- 20100520
- 20100519
- 20100518
- 20100517
- 20100515
- 20100514
- 20100513
- 20100512



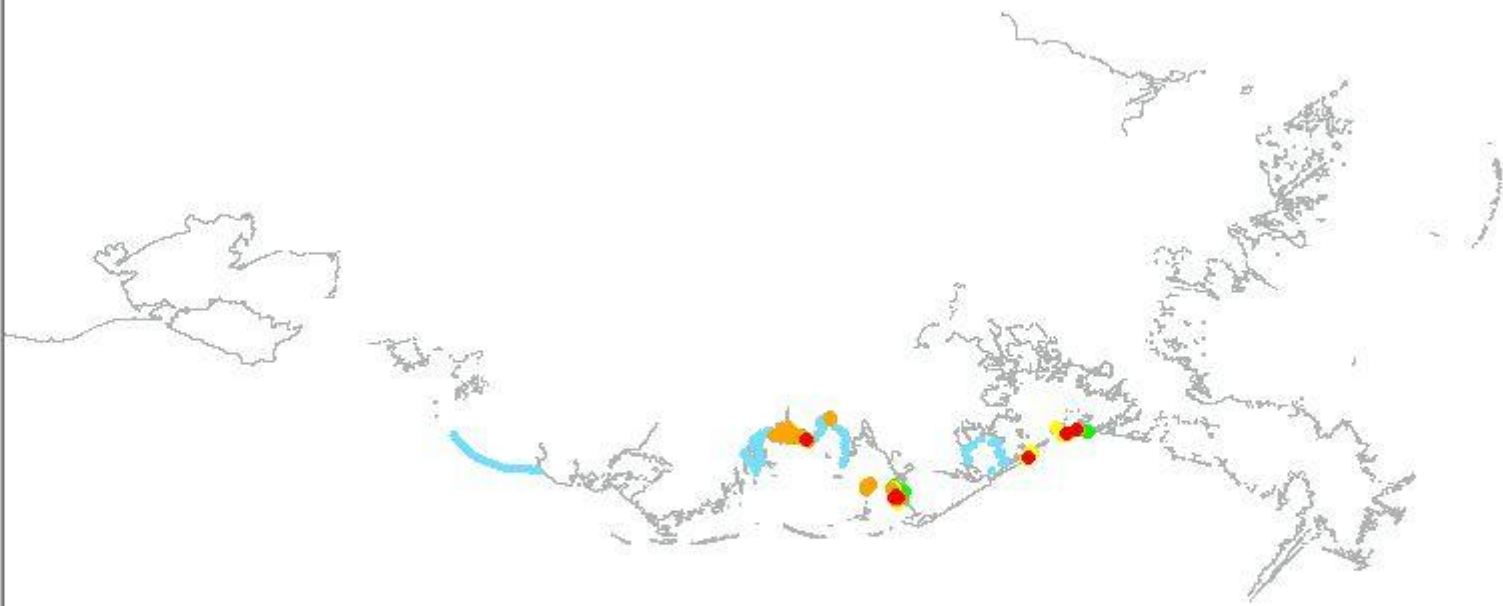
Layers

- 20100531
- 20100530
- 20100529
- 20100528

oil_order

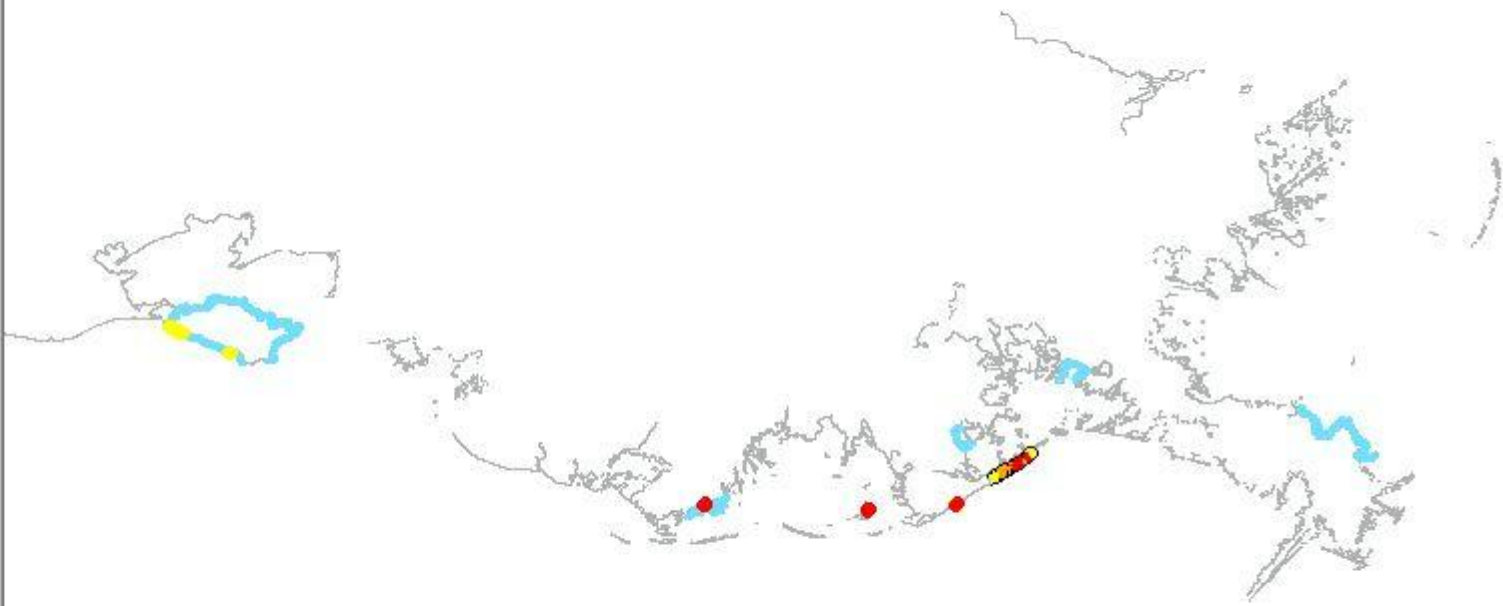
-  No Observed Oil
-  Negligible Tarballs
-  Light Tarballs
-  Moderate Tarballs
-  Heavy Tarballs
-  Very Light Oiling
-  Light Oiling
-  Moderate Oiling
-  Heavy Oiling

- 20100527
- 20100526
- 20100525
- 20100524
- 20100523
- 20100522
- 20100521
- 20100520
- 20100519
- 20100518
- 20100517
- 20100515
- 20100514
- 20100513
- 20100512

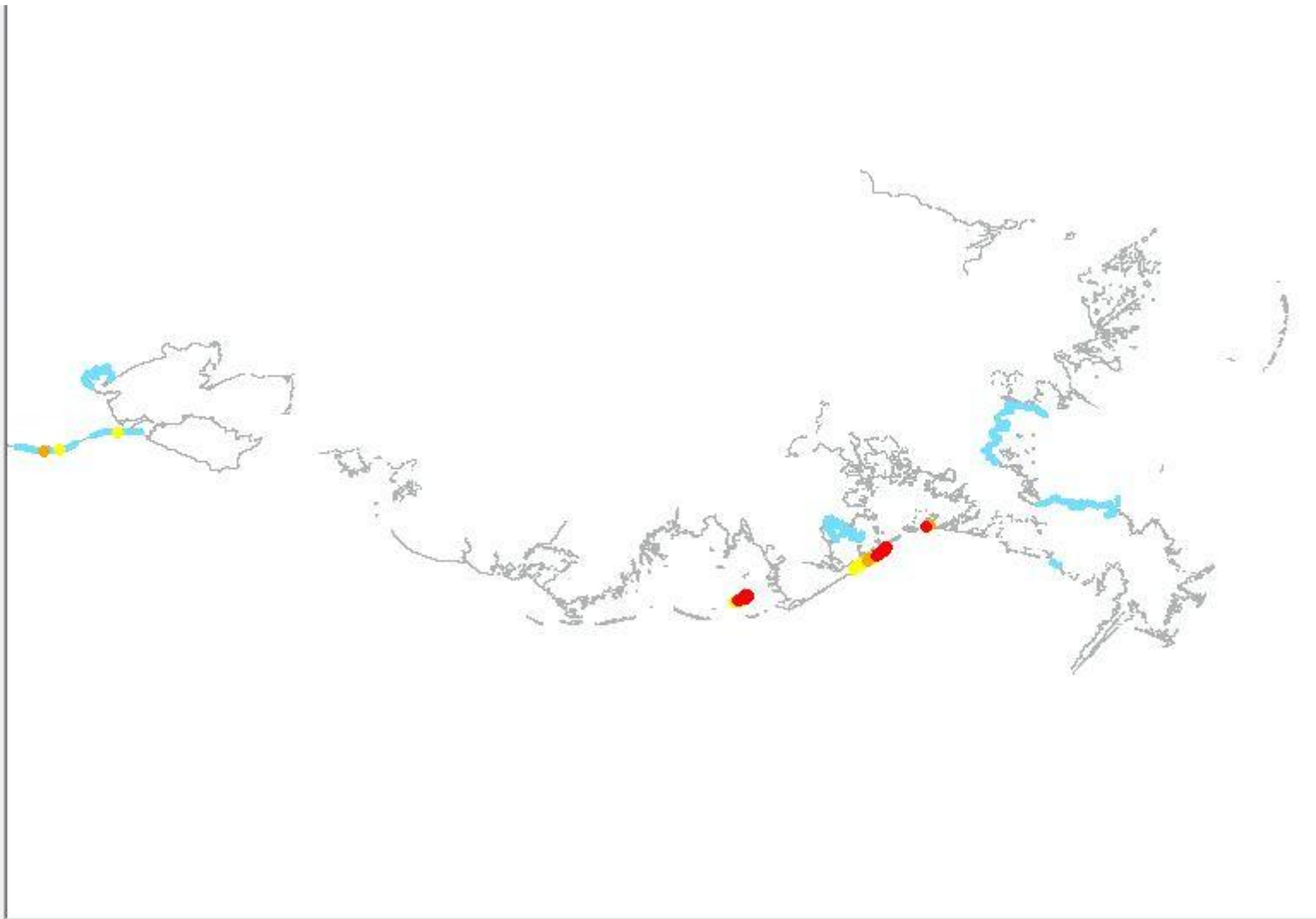


Layers

- 20100531
 - oil_order
 - No Observed Oil
 - Negligible Tarballs
 - Light Tarballs
 - Moderate Tarballs
 - Heavy Tarballs
 - Very Light Oiling
 - Light Oiling
 - Moderate Oiling
 - Heavy Oiling
- 20100530
- 20100529
- 20100528
- 20100527
- 20100526
- 20100525
- 20100524
- 20100523
- 20100522
- 20100521
- 20100520
- 20100519
- 20100518
- 20100517
- 20100515
- 20100514
- 20100513
- 20100512



- 20100617
 - 20100616
 - 20100615
 - 20100614
 - 20100613
 - 20100612
 - 20100611
 - 20100610
 - 20100609
 - 20100608
 - 20100607
 - 20100606
 - 20100605
 - 20100604
 - 20100603
- oil_order
- No Observed Oil
 - Negligible Tarballs
 - Light Tarballs
 - Moderate Tarballs
 - Heavy Tarballs
 - Very Light Oiling
 - Light Oiling
 - Moderate Oiling
 - Heavy Oiling
- 20100601
 - Cumulative_SCAT_LA

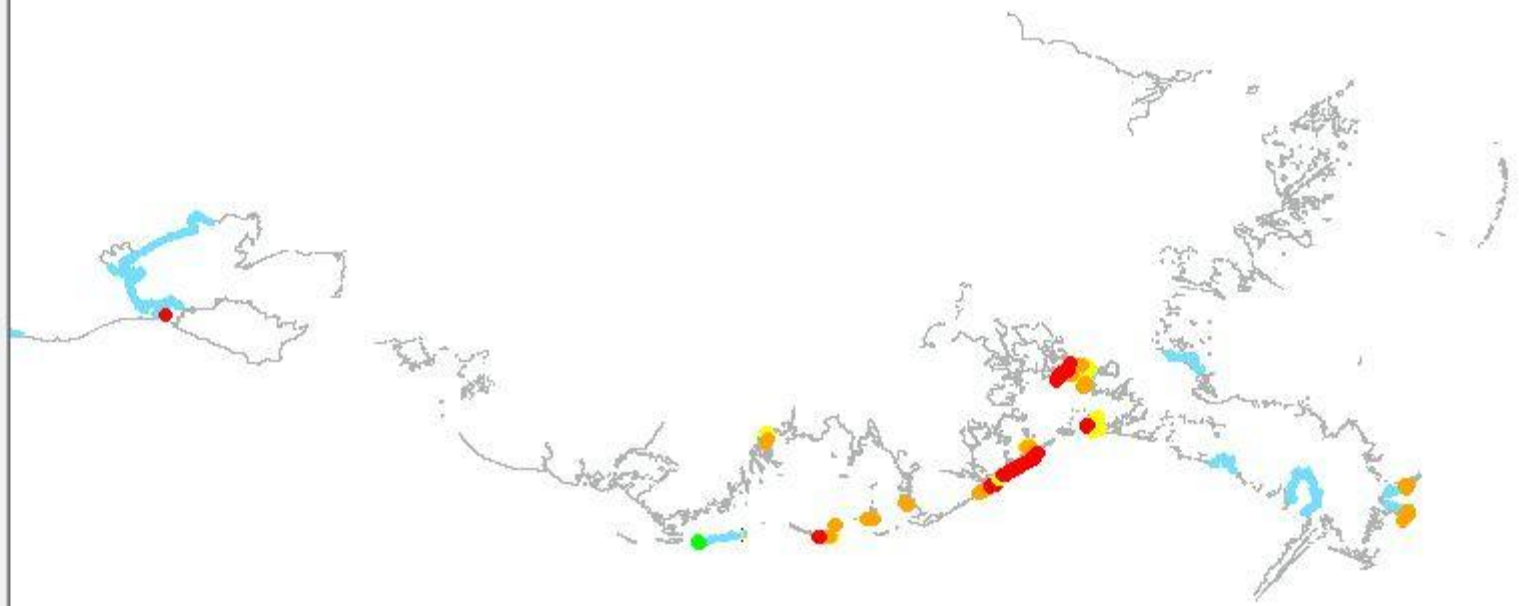


- 20100617
- 20100616
- 20100615
- 20100614
- 20100613
- 20100612
- 20100611
- 20100610
- 20100609
- 20100608
- 20100607
- 20100606

oil_order

- No Observed Oil
- Negligible Tarballs
- Light Tarballs
- Moderate Tarballs
- Heavy Tarballs
- Very Light Oiling
- Light Oiling
- Moderate Oiling
- Heavy Oiling

- 20100605
- 20100604
- 20100603
- 20100601
- Cumulative_SCAT_LA

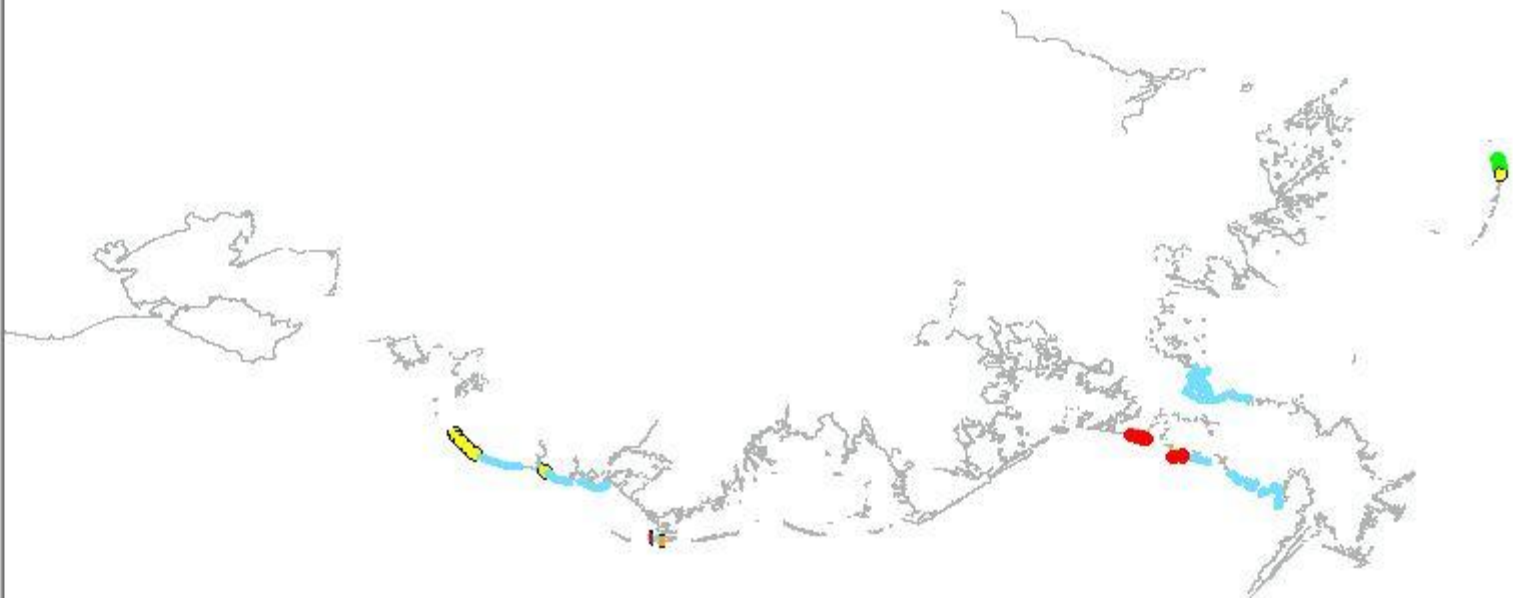


- 20100617
- 20100616
- 20100615
- 20100614
- 20100613
- 20100612
- 20100611
- 20100610
- 20100609

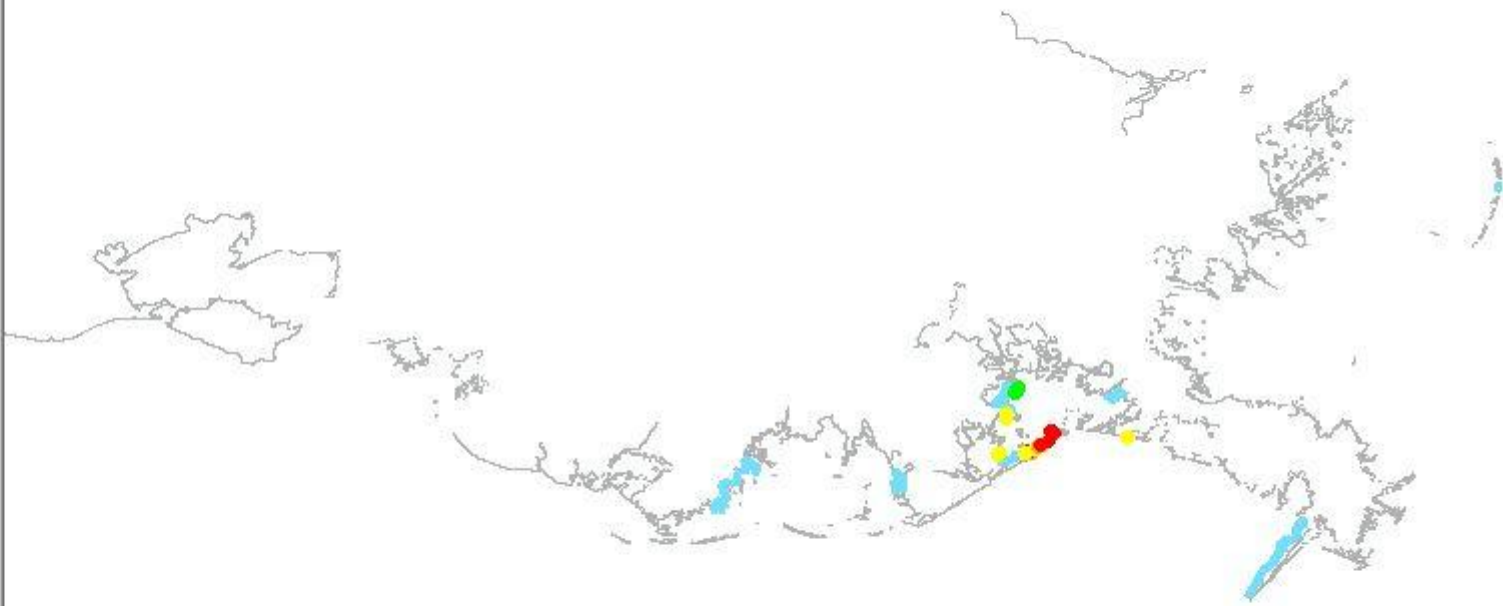
oil_order

- No Observed Oil
- Negligible Tarballs
- Light Tarballs
- Moderate Tarballs
- Heavy Tarballs
- Very Light Oiling
- Light Oiling
- Moderate Oiling
- Heavy Oiling

- 20100608
- 20100607
- 20100606
- 20100605
- 20100604
- 20100603
- 20100601
- Cumulative_SCAT_LA



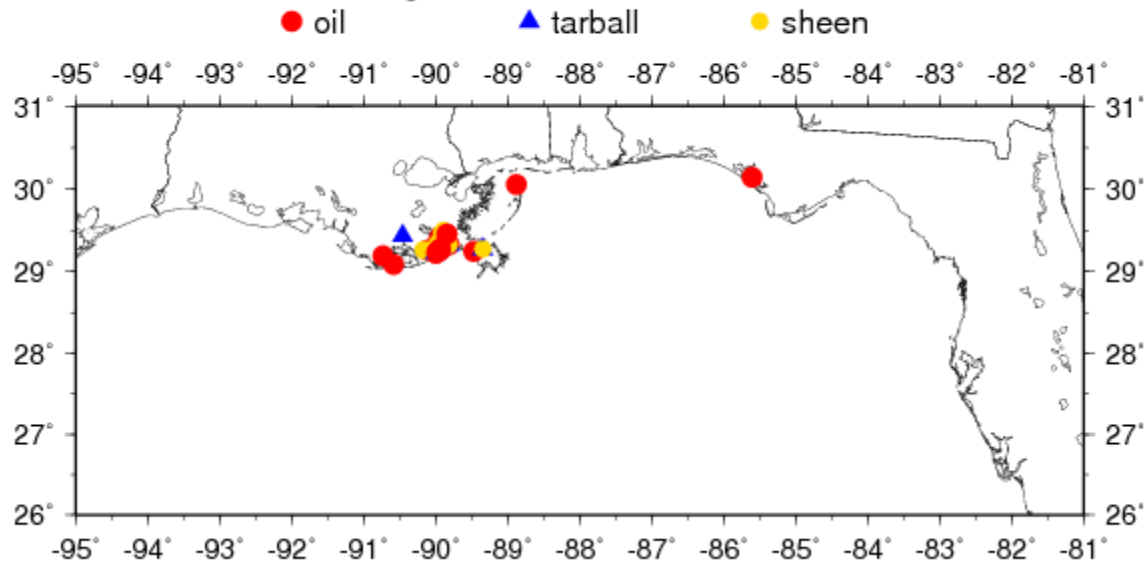
- 20100617
- 20100616
- 20100615
- 20100614
- 20100613
- 20100612
- oil_order
- No Observed Oil
- Negligible Tarballs
- Light Tarballs
- Moderate Tarballs
- Heavy Tarballs
- Very Light Oiling
- Light Oiling
- Moderate Oiling
- Heavy Oiling
- 20100611
- 20100610
- 20100609
- 20100608
- 20100607
- 20100606
- 20100605
- 20100604
- 20100603
- 20100601
- Cumulative_SCAT_LA



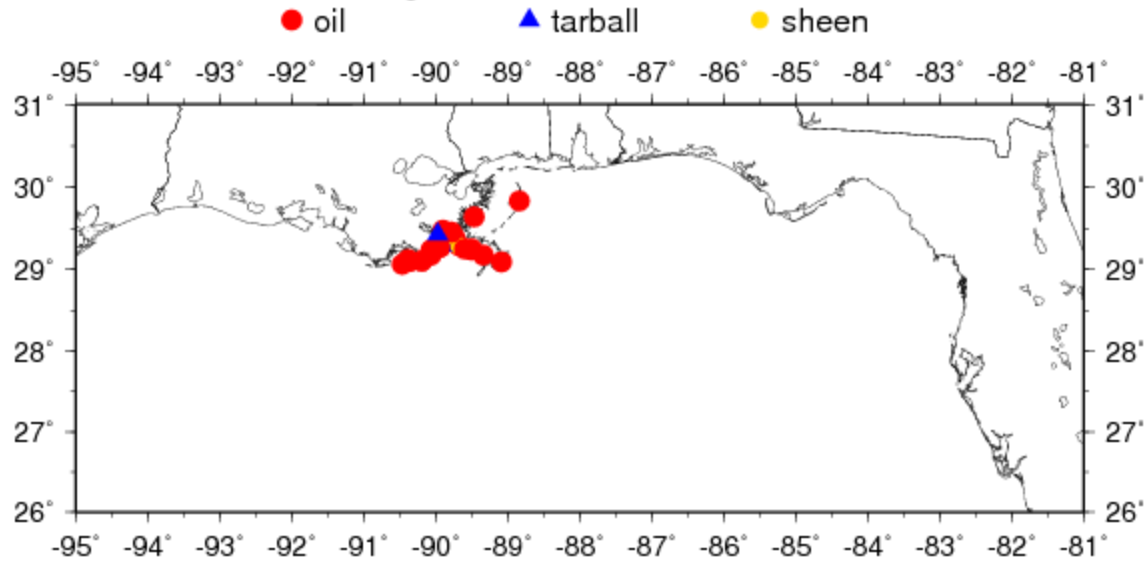
Louisiana Bucket Brigade data

- Volunteer organization which tabulated all oil spill news and information from the media, phone calls, emails, etc.
- Available in a spreadsheet
- Covers the entire oil spill and plentiful datapoints
 - Temporal data holes
 - Dataset also contained news accounts, community meetings, tidbits such as “smells from oil burning.” These have been removed
 - Latitude and longitude not always included, just a specific location. We have added an estimated latitude and longitude if possible

Louisiana Bucket Brigade - Oil & Tarball 20100618-20100620



Louisiana Bucket Brigade - Oil & Tarball 20100621-20100623



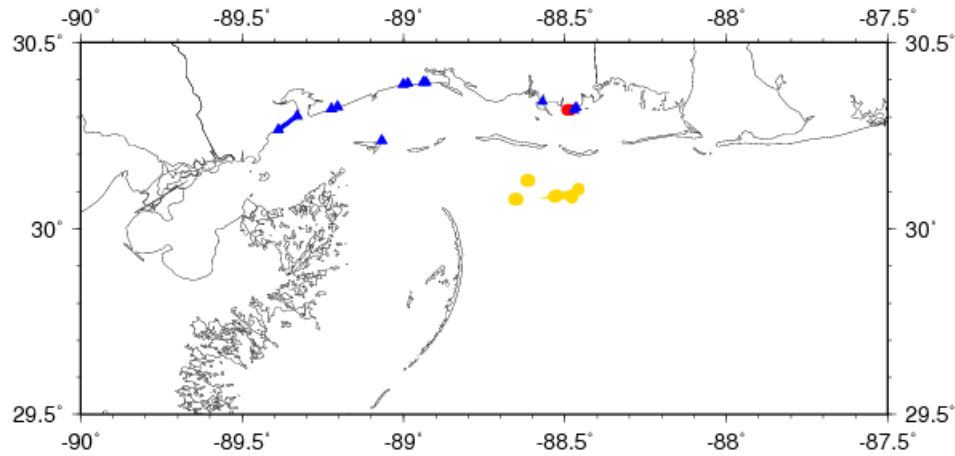
State DEQ

- The DEQs released almost daily statements of oil spill information in pdf reports
- This data is not digitized.
- Covers different timeframes of the oil spill with modest datapoints
 - MS DEQ contained latitude and longitude for most incidents. It also sometimes described geographic coverage, not just points. MSU has developed a spreadsheet of these reports.
 - LA DEQ is similar, but covers the entire period and contains more data. However, it does not provide latitude and longitude. Geographic regions in the marsh or sounds are referenced instead. We are working on a spreadsheet, but it is tedious.

MDEQ dataset example

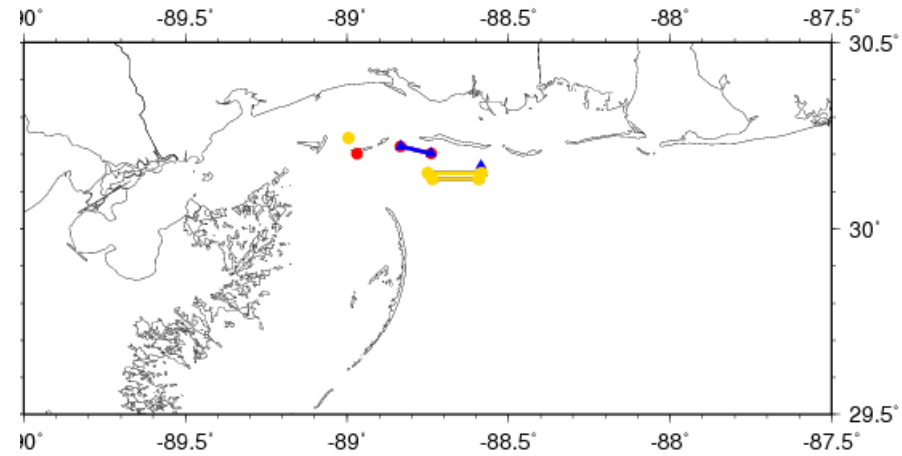
MDEQ- Oil Reports 20100703

● oil ▲ tar ● oilSheen ★ mousse



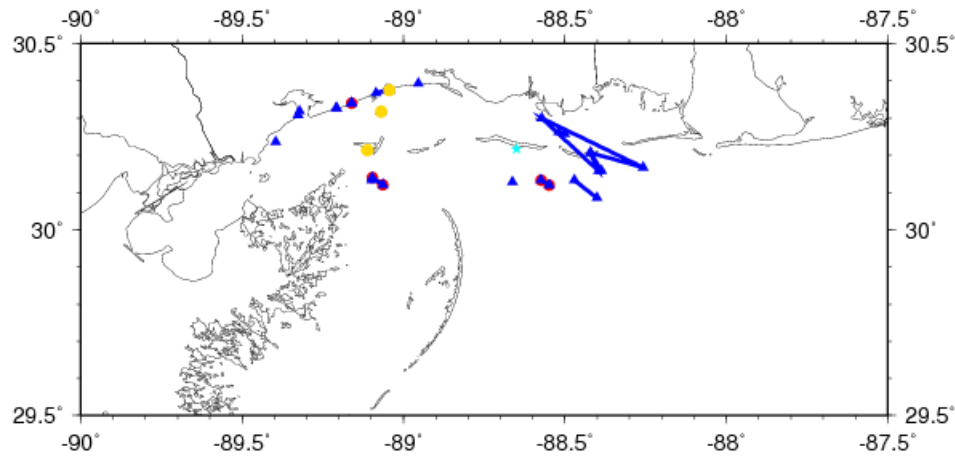
MDEQ- Oil Reports 20100706

● oil ▲ tar ● oilSheen ★ mousse



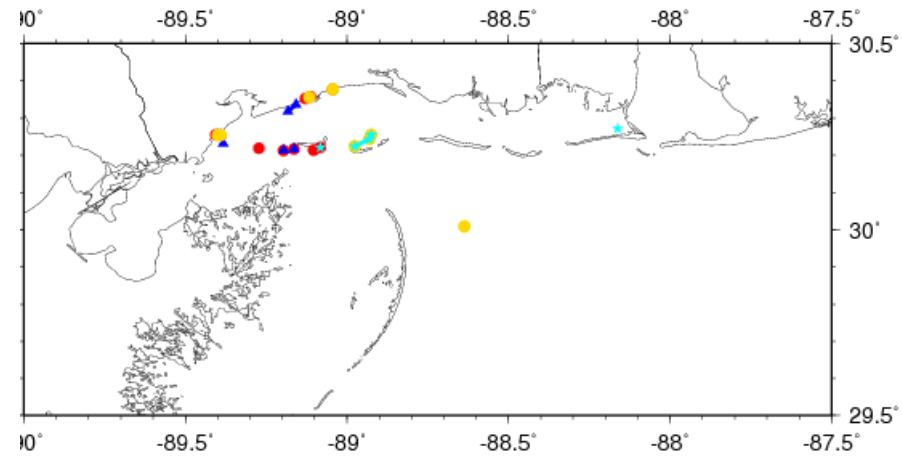
MDEQ- Oil Reports 20100707

● oil ▲ tar ● oilSheen ★ mousse

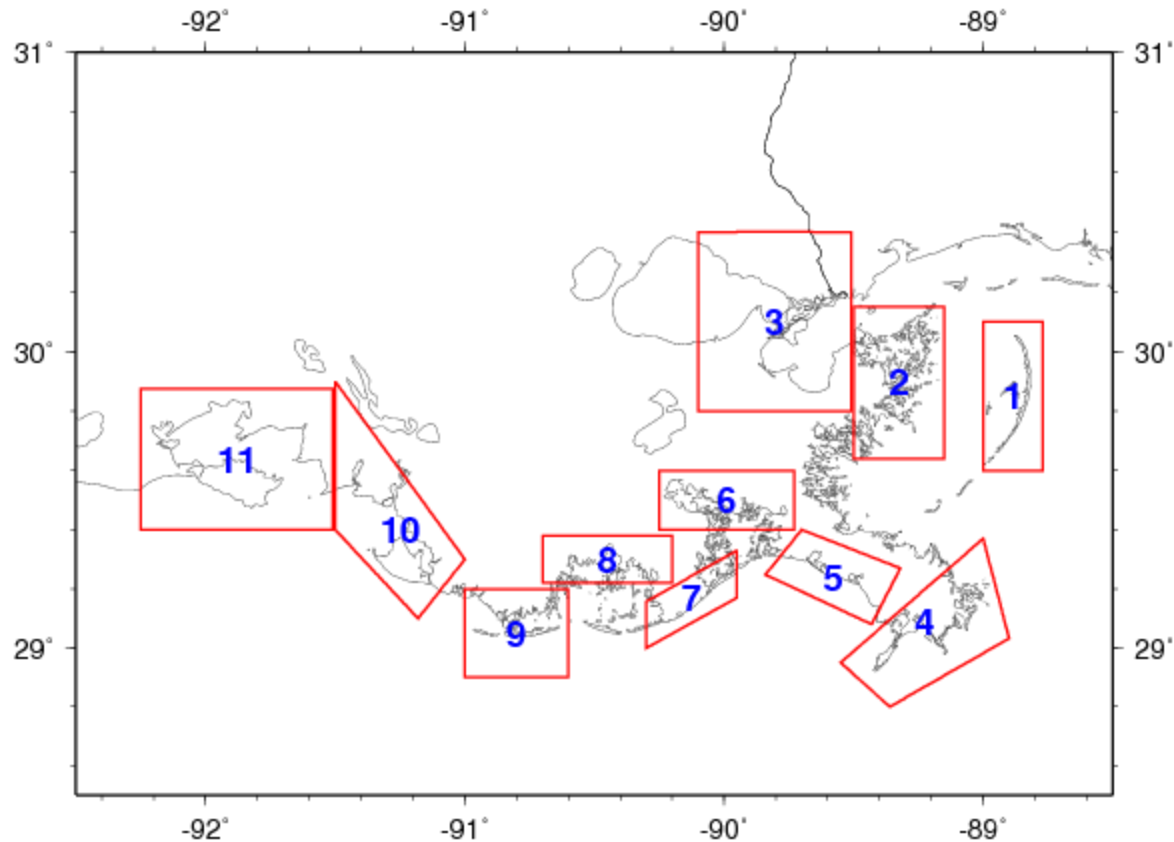


MDEQ- Oil Reports 20100708

● oil ▲ tar ● oilSheen ★ mousse



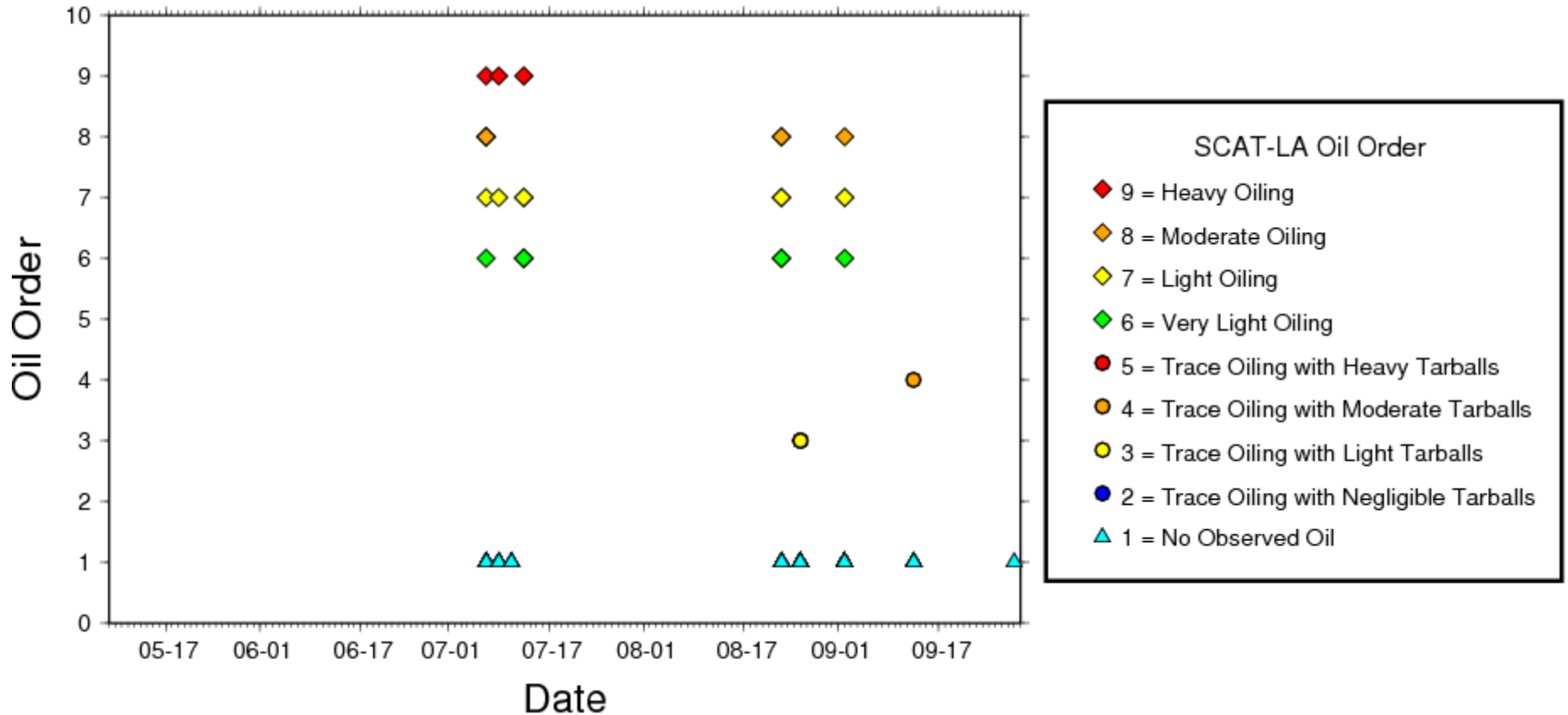
Predefined Regions



1. Chandeleur Islands
2. Eastern Biloxi Marsh
3. LakeBorge / LakePontchartrain
4. Mississippi River Mouth
5. Sandy Point
6. Barataria Bay North End
7. Grand Isle / Fourchon
8. Terrebonne Bay / Timbalier Bay North End
9. Last Islands
10. Atchafalaya Delta
11. Russell Sage Mash / Vermillion Bay / West Cote Blanche Bay

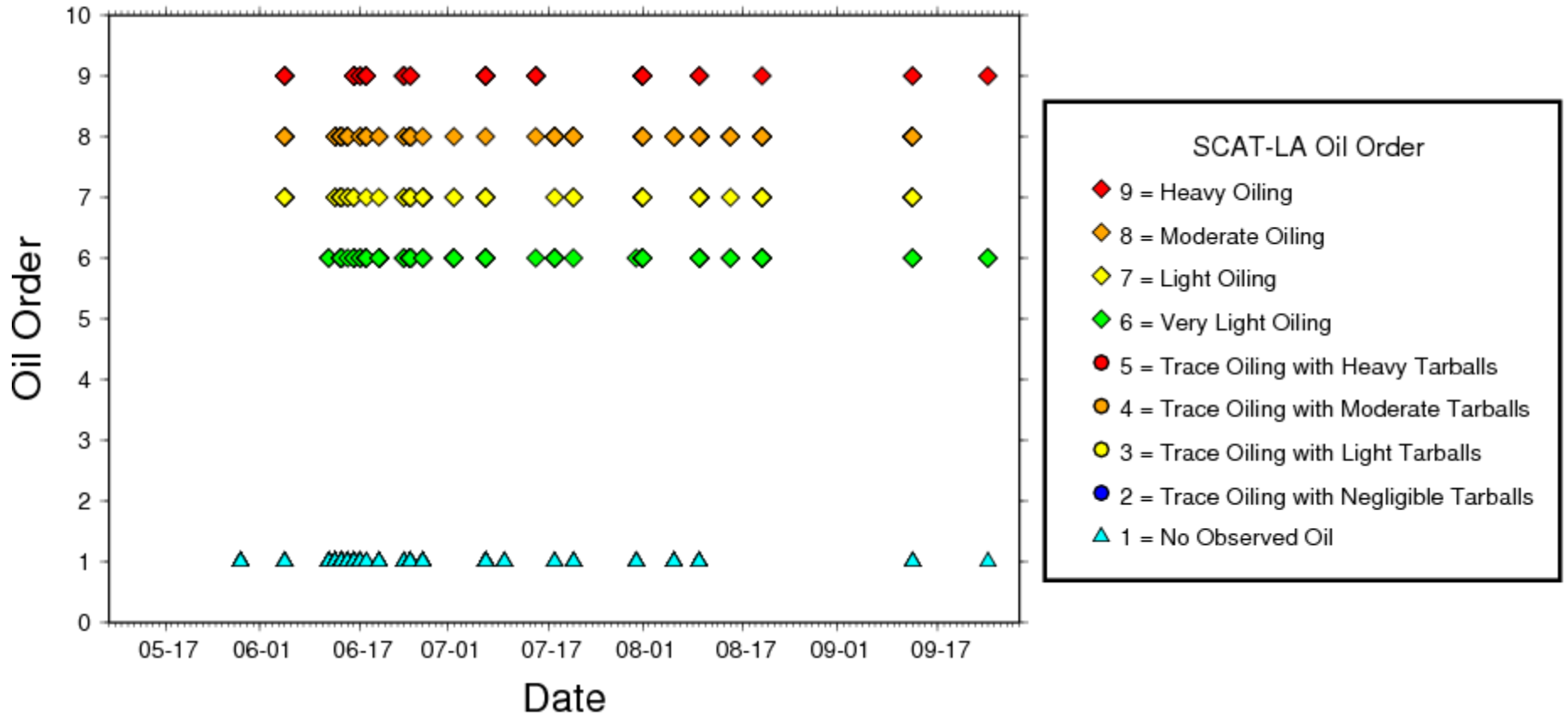
Lake Borgne and Lake Pontchartrain

SCAT-LA Oil Observations - Region 3



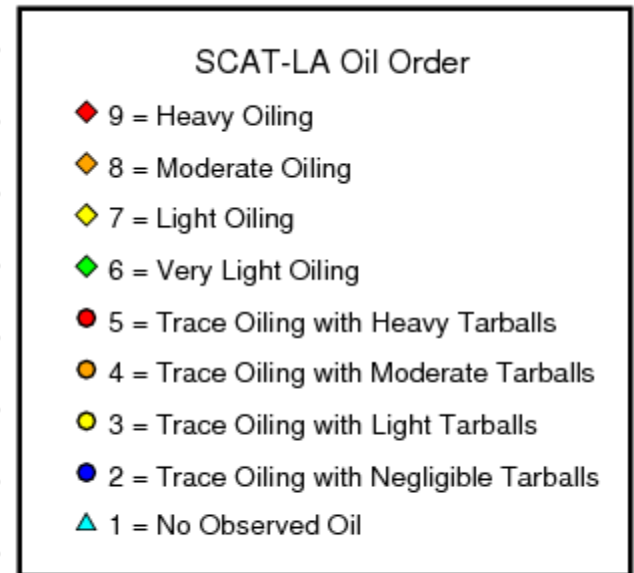
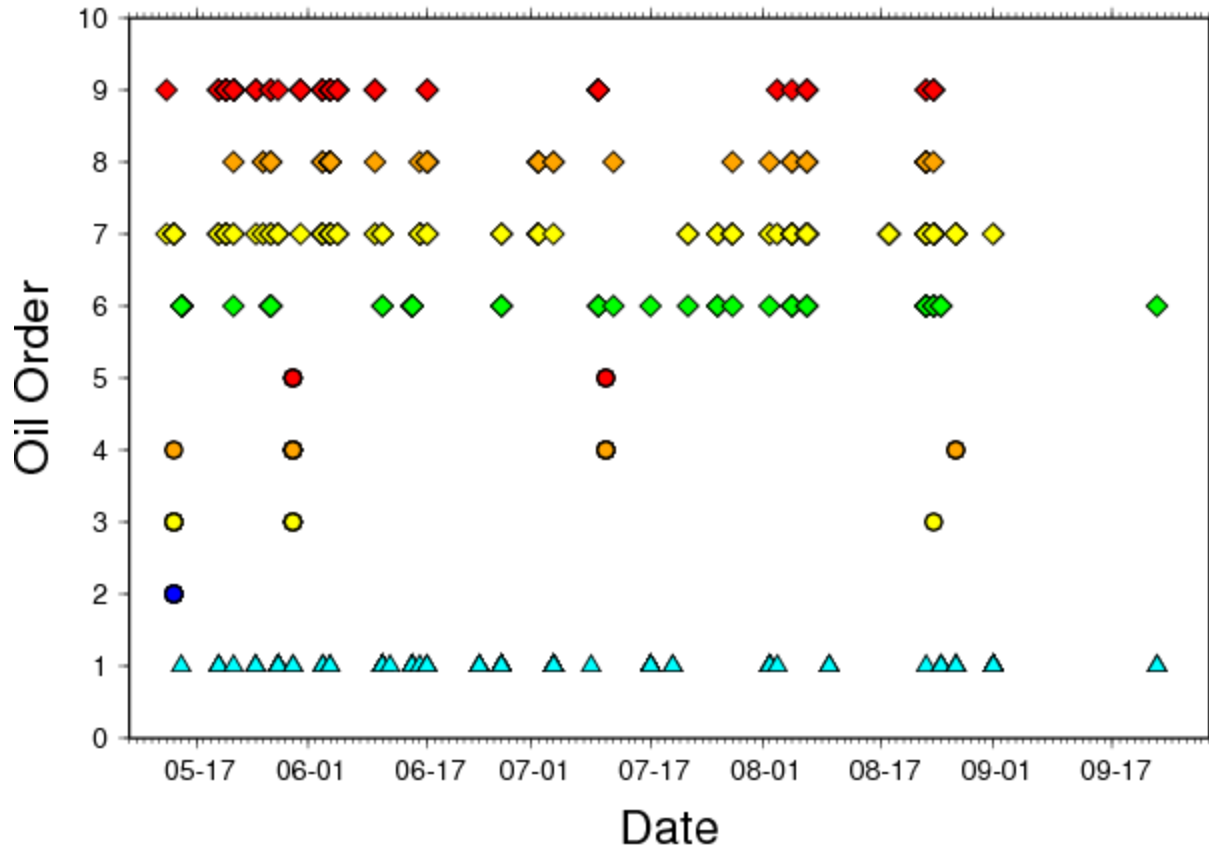
Northern Barataria Bay

SCAT-LA Oil Observations - Region 6



Grand Isle and Fourchon

SCAT-LA Oil Observations - Region 7

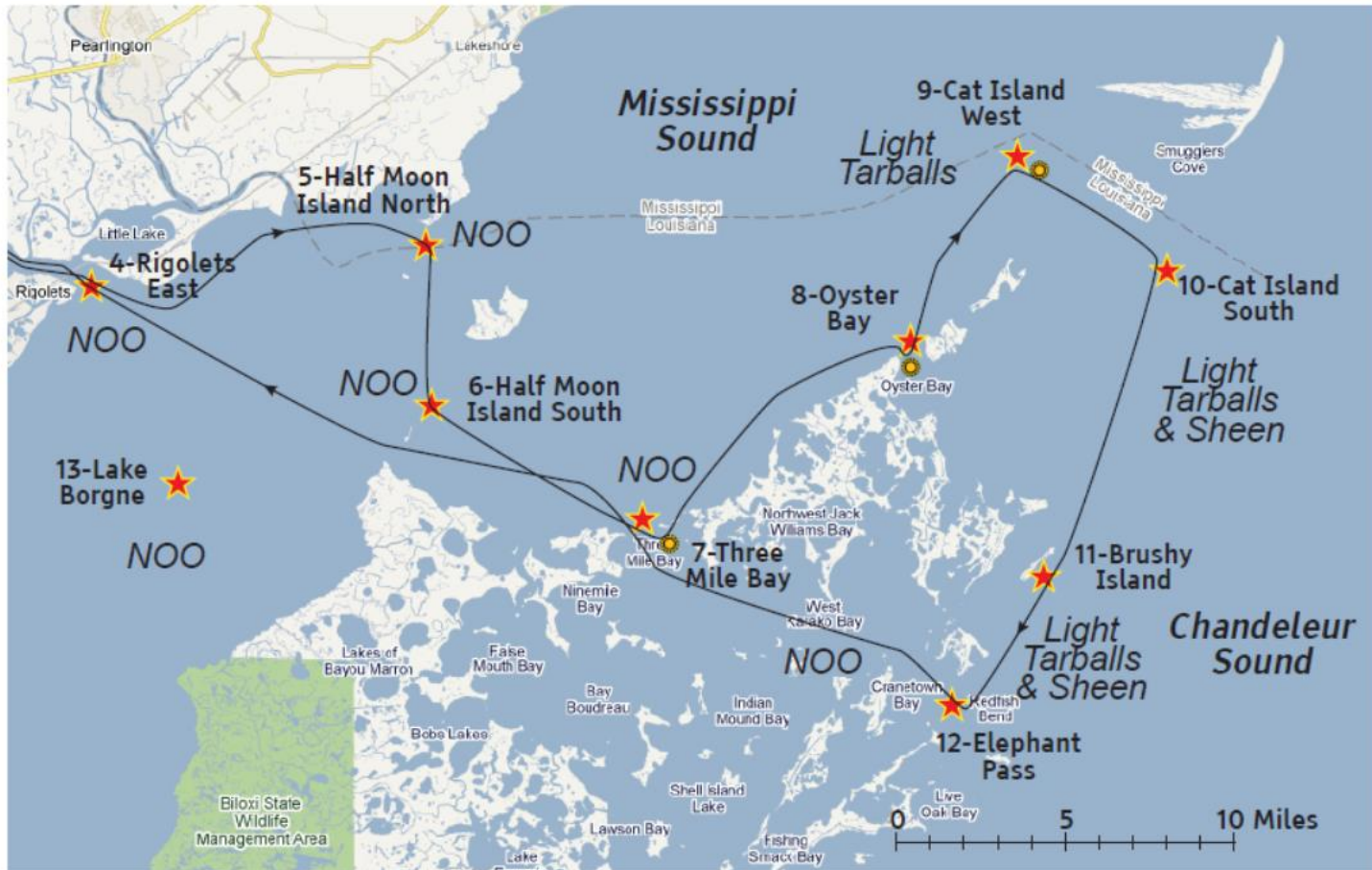


Future work

- Development of oil spill databases for Louisiana DEQ and Lake Pontchartrain Basin Foundation
- Synthesize datasets for comprehensive analysis
- Analysis of all databases, with a summary of all oil incursion along coastline region, wetlands, and in the open waters
- Incorporate dispersion and evaporation components into oil spill model
- Validate oil spill model against database
- Overall goal: fate and transport analysis

Lake Pontchartrain Basin Foundation
 Oil Monitoring Report 7/2/2010 Detail

LAKE PONTCHARTRAIN BASIN FOUNDATION
 SAVE OUR COAST SAVE OUR LAKE



★ Monitoring Point ● Oil Monitoring Sentinel → Vessel Path

NOO = No Observed Oil

Light = <5% Coverage

Medium = 5% to 50% Coverage

Heavy = >50% Coverage